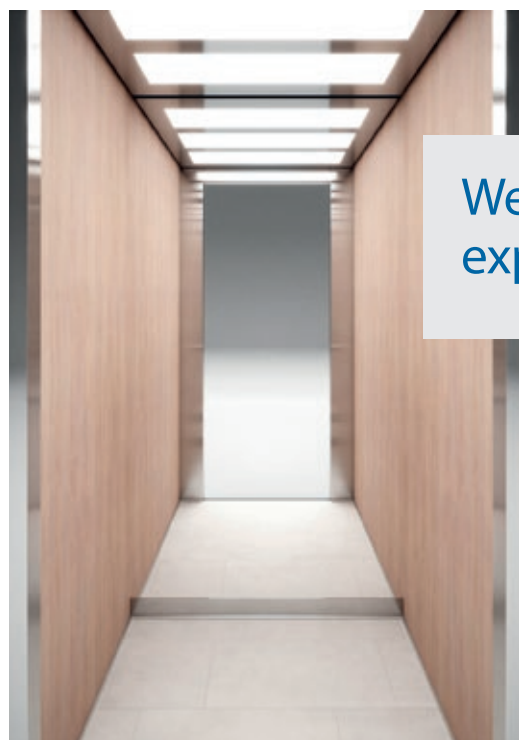


# Design & Materials





Design and engineering are intertwined in every KLEEMANN project. The collection of textures and materials for cabin design presented here, offers creative tools for solutions of aesthetic excellence that cover all engineering prerequisites and adapt to European Standard EN81-20.



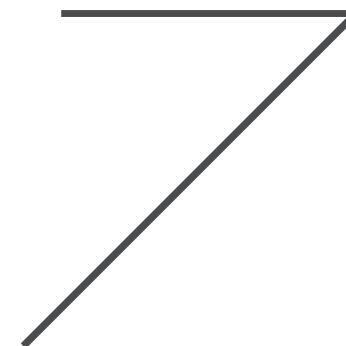
We design passenger experiences



## Creative power

Design has to integrate reality, foresee tomorrow and create an elevated user experience. Rather than thinking of an elevator as a box that moves, we see it as an active social space in a building, that is used and lived by people.

Industrial designer Andreas Zapatinas joined the creative forces of KLEEMANN in 2007 and new technical and aesthetic solutions have been explored. Since then, the experienced KLEEMANN Design Team has build on these fundamental ideas taking KLEEMANN lifts to the next level.







# Design options Cabins



## Purity

Purity cabin, the new addition to the standard range, combines **optimized construction and upgrade of materials** with simultaneous reduction of cost and installation time. **Easy installation from inside the cabin**, minimal design with **no visible screws**, and **new packaging** that minimizes installation time, are just few of the advantages that make Purity a high-quality cabin, ideal for your lift.

### Advantages

- Reduction of installation time by 20%
- Cost reduction thanks to optimized construction
- Improvements in aesthetics & materials

### Optimized construction

- No openings & curves on side panels
- New ceiling with LED panel
- New design for easy replacement of lighting
- No visible screws on ceiling, car operating panels & sill
- Easy installation from inside the cabin
- Same construction for all car sling types
- Reduction of total ceiling height
- New packaging







# Purity S

with  
Stainless Steel

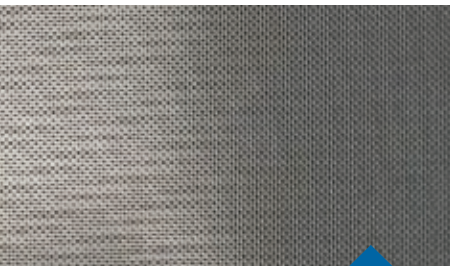
Wall Stainless Steel Satin  
Floor Vinyl Cement Block  
Handrail K2  
Ceiling O14



## Walls Stainless Steel



Mirror



Linen LU



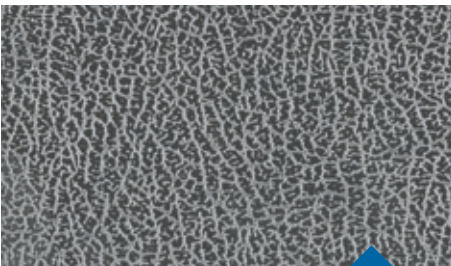
Gold Satin



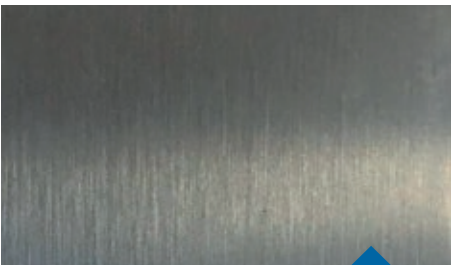
Gold Mirror



Checks



12LG



Satin

Also available at  
KLEEMANN Portal

Colors may differ slightly from those shown in the brochure, owing to the limitations of the printing process.

Pictures of the materials illustrate detailed part of each material and not its rendering on the cabin surface.



# Purity S

with  
skinplate

Wall Skinplate F12PPS  
Floor Artificial Granite  
Regal White  
Handrail K2  
Ceiling O14



## Walls Skinplate



A67 SMA



A90 GTA



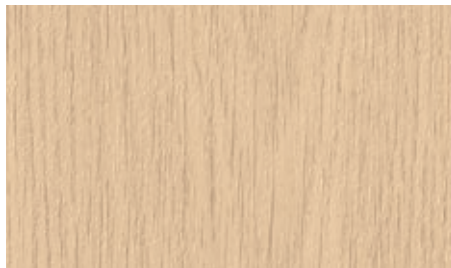
PPS13



PPS93



F12PPS



DL86



N19SA

Also available at  
**KLEEMANN Portal**

Colors may differ slightly from those shown in the brochure, owing to the limitations of the printing process.

Pictures of the materials illustrate detailed part of each material and not its rendering on the cabin surface.





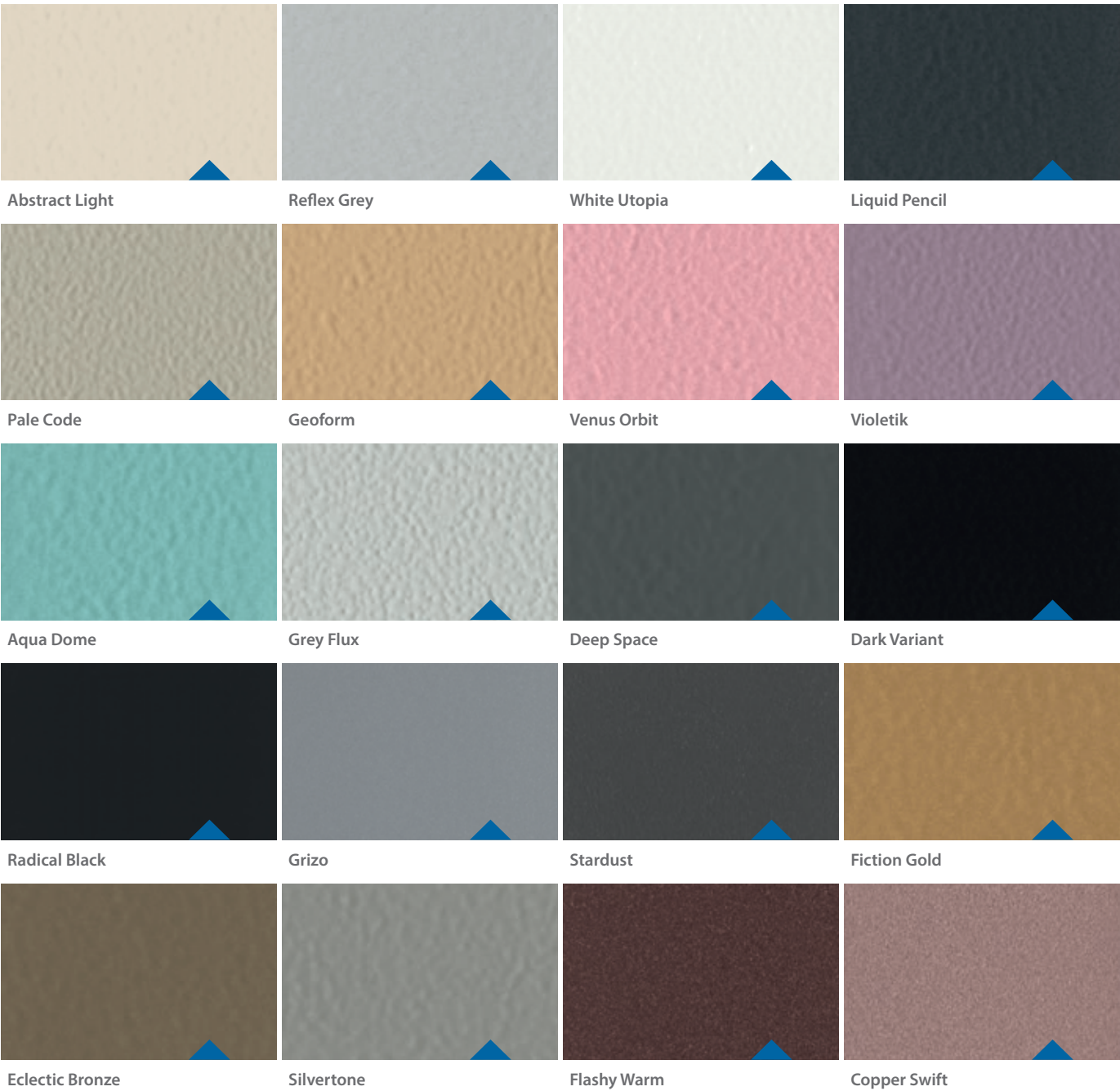
# Purity S

with  
paint

Wall Paint White Utopia  
Floor Rubber 6801  
Handrail K3  
Ceiling OLP1 Led Panel



## Walls Paint



Also available at  
KLEEMANN Portal

Colors may differ slightly from those shown in the brochure, owing to the limitations of the printing process.

Pictures of the materials illustrate detailed part of each material and not its rendering on the cabin surface.



# Purity C

with  
claddings

Wall Smooth Sand  
Floor Cement Block  
Handrail K2  
Ceiling O7



## Walls Wood like



Timber Variant      Smooth Sand      Hacienda Wood

## Steel like



Mighty Silver      Bronzo      Oceanic Blue

## Concrete like



Carrara Frost      Blush Box      Lime Light      Cloud Lime

Also available at  
KLEEMANN Portal

Colors may differ slightly from those shown in the brochure, owing to the limitations of the printing process.

Pictures of the materials illustrate detailed part of each material and not its rendering on the cabin surface.



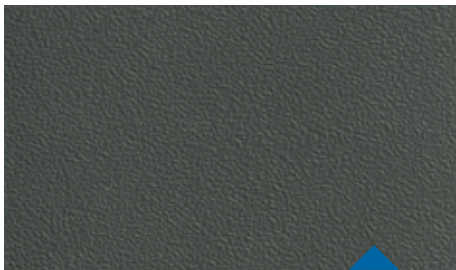


# Purity

## Interior materials

### Floors

#### Rubbers



6727



6801



6768

### Artificial Granites



Regal Beige



Regal Black

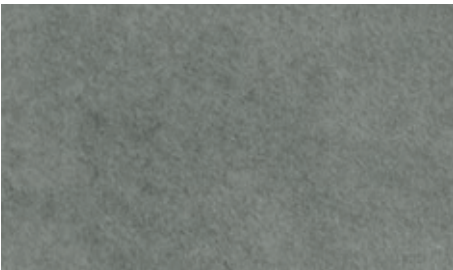


Regal Red



Regal White

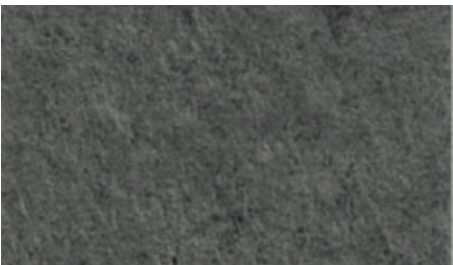
### Vinyl



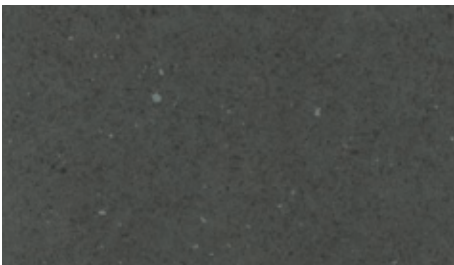
Concrete Module



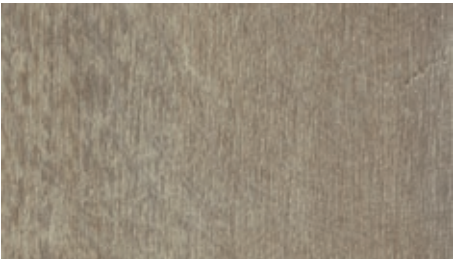
Cement Block



Scivaro Grey



Dark Mineral



Oak Luxus



Mosaicon

### Handrails



K2

AVAILABLE FINISHES  
Mirror  
Gold Satin



K3 According to EN81-70

AVAILABLE FINISHES  
Mirror



K6

AVAILABLE FINISHES  
Mirror

Also available at  
**KLEEMANN Portal**

Colors may differ slightly from those shown in the brochure, owing to the limitations of the printing process.

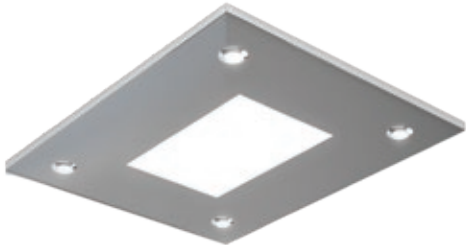
Pictures of the materials illustrate detailed part of each material and not its rendering on the cabin surface.



Ceilings

FINISHES

- Satin
- Mirror
- Gold Mirror
- Gold Satin
- Paint



O3



O7



O10



O14



O15



O55



OLP1 (Led Panel)







KLEEMANN range of cabins is wide and versatile featuring cabin solutions that are customizable and can be delivered in record fast time. The collection comprises of cabins adaptable to the project’s design specifications that are ideal for residential, commercial use or public buildings.

The varied assortment of materials offered can transform the cabin’s design to fit the building ambiance and use. Multiple options for walls, floor and ceiling, offer creative freedom to compile different aesthetic style types.



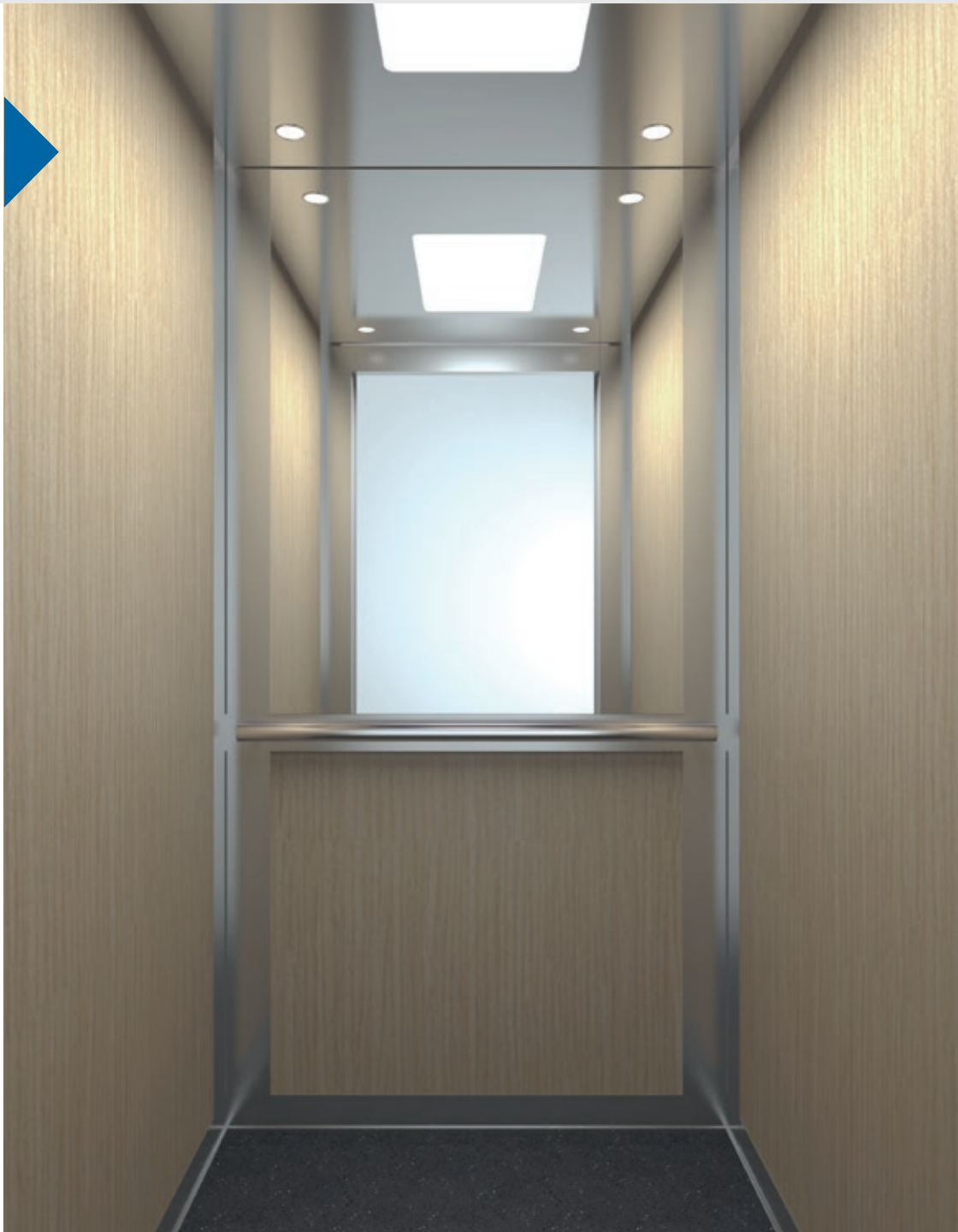




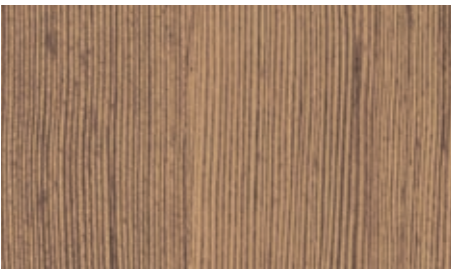
# A310

A310 cabin is one of the most popular choices for a practical but elegant lift solution. Combining multiple design tools, create a cabin to your own design specifications and take advantage of a wide range of laminate walls, floor and ceiling options. A great choice for residential uses and private residences, this cabin presents a versatile and cost-effective solution.

Wall HP Laminate AB 383  
Floor Rubber 6727  
Handrail K2  
Ceiling O3



## Walls HP Laminate



AB 387



AB 383



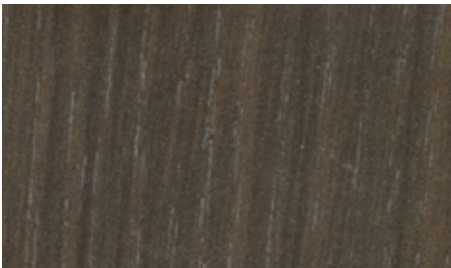
AB 659



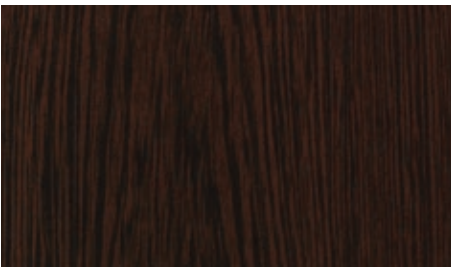
AB 1306



DU 8110



AB 1355



HD 2307

Also available at  
**KLEEMANN Portal**

Colors may differ slightly from those shown in the brochure, owing to the limitations of the printing process.

Pictures of the materials illustrate detailed part of each material and not its rendering on the cabin surface.

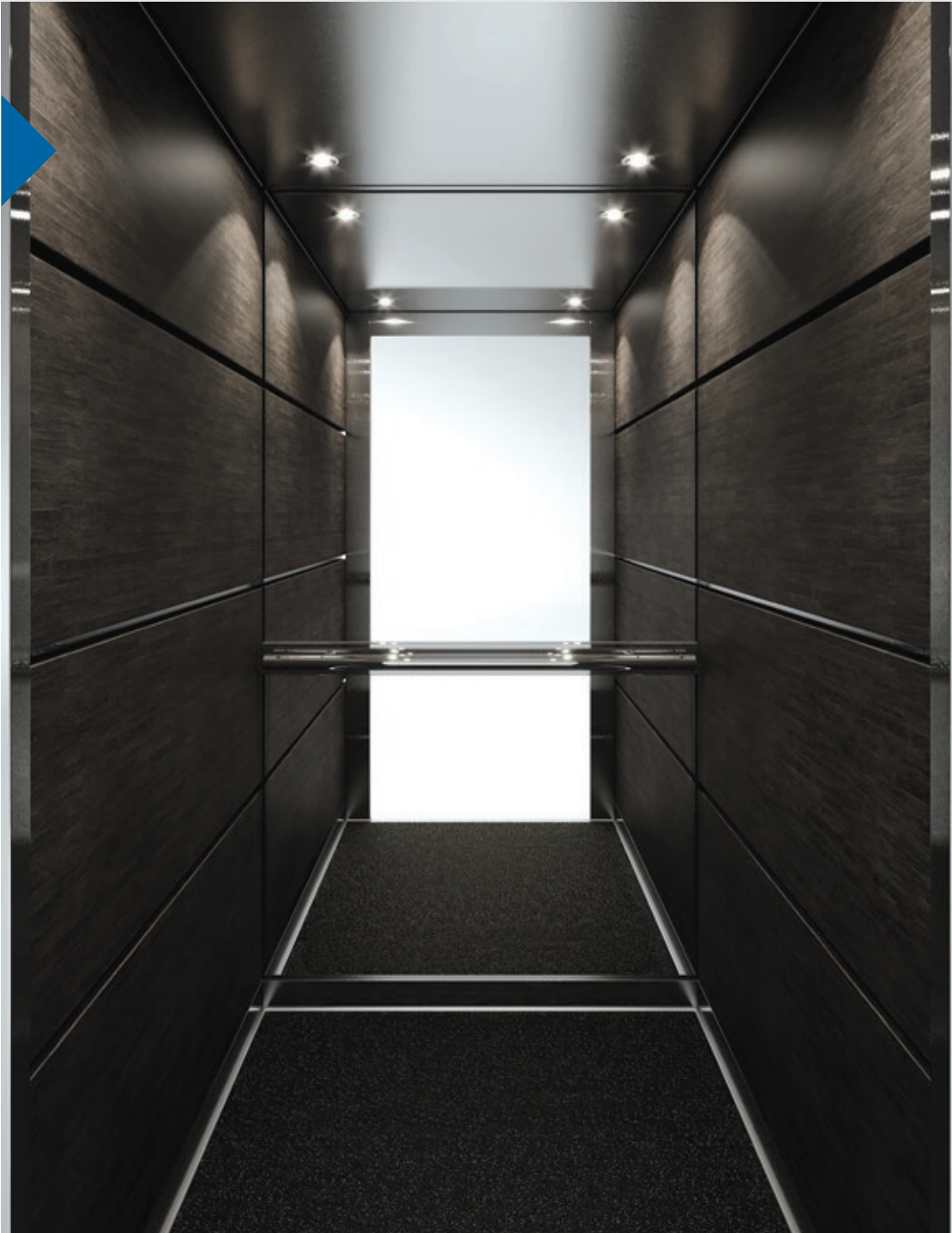




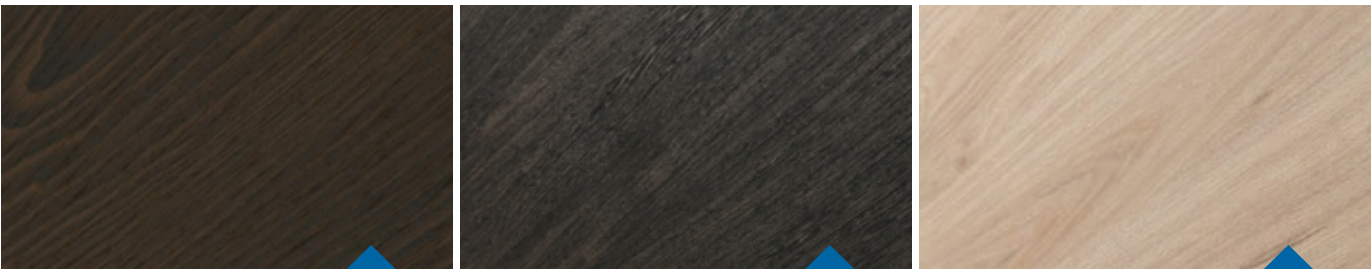
# A510

Sophistication and intellectual design define the A510 cabin. Available in a range of wooden walls and featuring elegant stainless steel detailing, such as the classic combination of polished oak veneer and stainless steel. This cabin is ideal for commercial uses that demand a touch of finesse.

Wall Ecliptic Black  
Floor Rubber 6801  
Handrail K2  
Ceiling O7



## Walls Wood veneer (fire retardant)



Wood Mark

Ecliptic Black

Vorion Wood

Also available at  
**KLEEMANN Portal**

Colors may differ slightly from those shown in the brochure, owing to the limitations of the printing process.

Pictures of the materials illustrate detailed part of each material and not its rendering on the cabin surface.



# L310

The L310 cabin offers durability, simplicity and value for money and a range of interior materials that built to last. The popularity of this cabin lies in its functional but elegant design making it an ideal choice for all type of buildings.

Wall Stainless Steel Satin  
Floor Rubber 6768  
Handrail K2  
Ceiling O14



## Walls Stainless Steel



Mirror



Linen LU



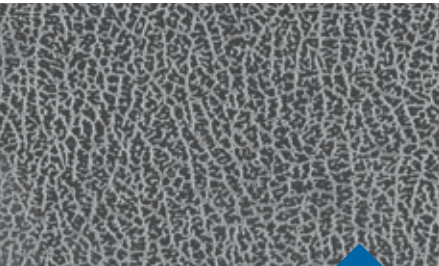
Gold Satin



Gold Mirror



Checks



12LG



Satin

Also available at  
**KLEEMANN Portal**

Colors may differ slightly from those shown in the brochure, owing to the limitations of the printing process.

Pictures of the materials illustrate detailed part of each material and not its rendering on the cabin surface.

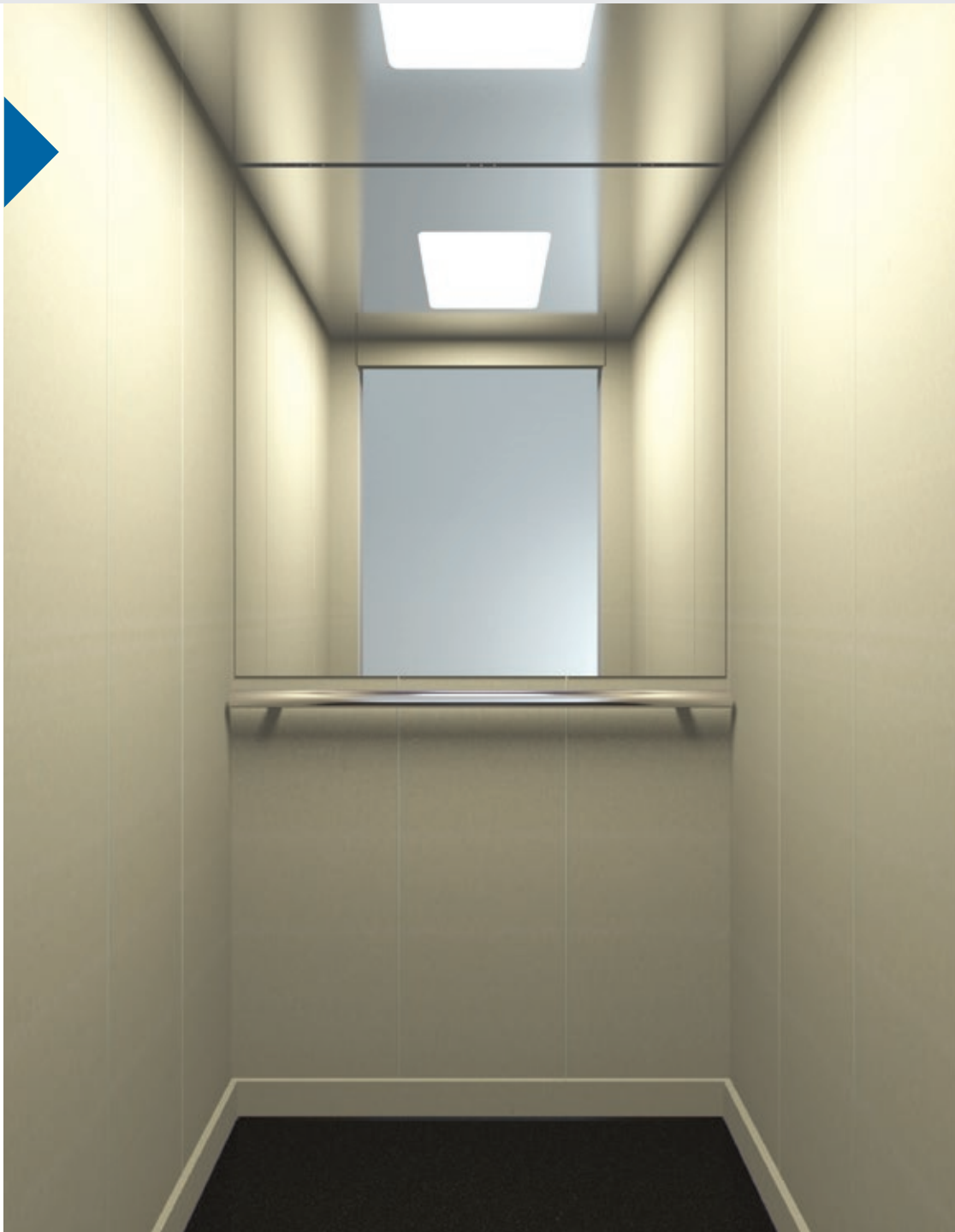




# L320

Integrating simplicity and elegance, the L320 cabin is an excellent choice for a range of residential uses, home solution and offices. Offering modest, functional and contemporary design alongside a wide range of materials and possibilities, this cabin provides a versatile and flexible solution.

Wall A67 SMA  
Floor Rubber 6801  
Handrail K2  
Ceiling O10



## Walls Skinplate



A67 SMA

A90 GTA

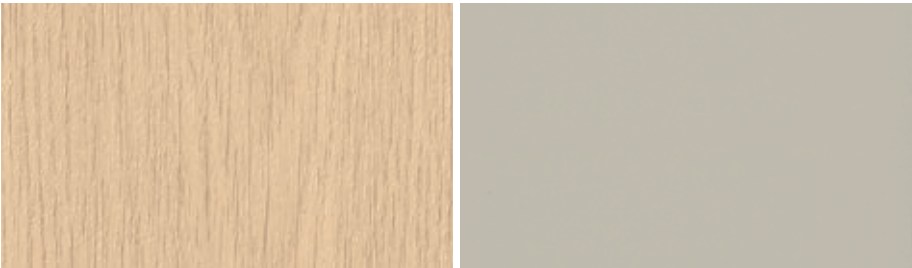
B13



PPS13

PPS93

F12PPS



DL86

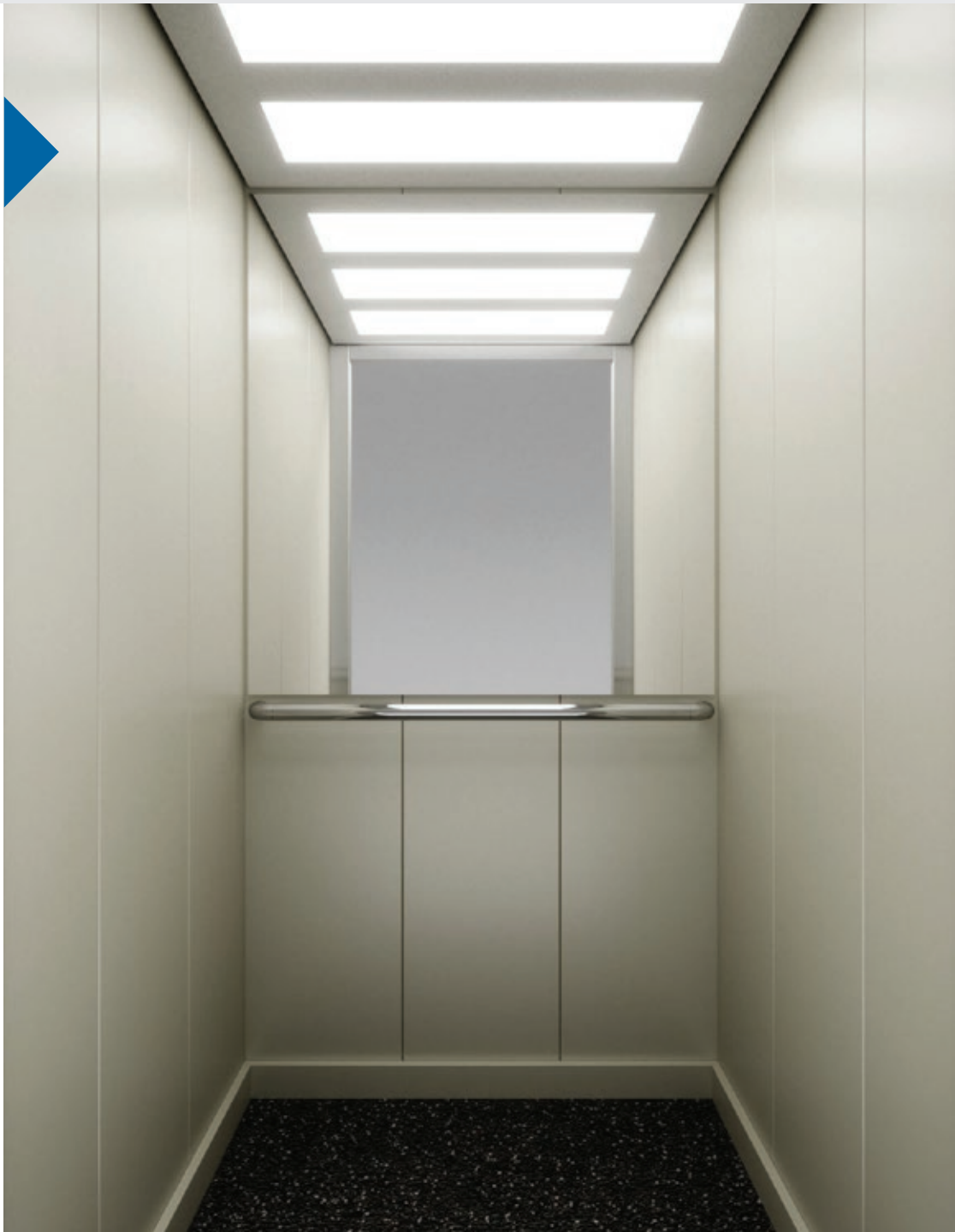
N19SA



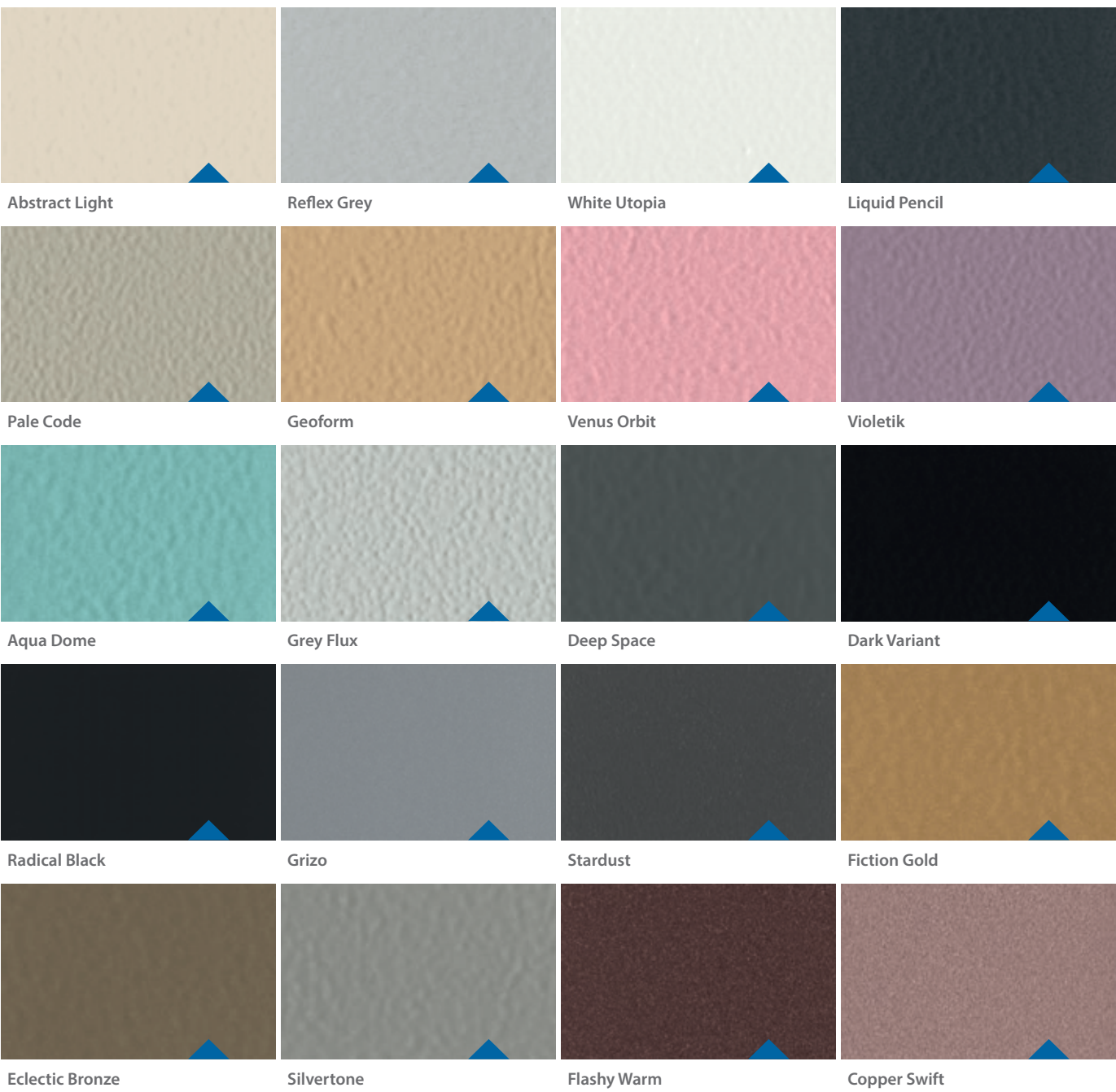
# L330

The L330 is a cost-effective solution that offers a wide range of colors to create a passenger experience that complements the aesthetic of any residential, commercial and public building.

Wall Paint Pale Code  
Floor Rubber 6801  
Handrail K3  
Ceiling O55



## Walls Paint



Also available at  
**KLEEMANN Portal**

Colors may differ slightly from those shown in the brochure, owing to the limitations of the printing process.

Pictures of the materials illustrate detailed part of each material and not its rendering on the cabin surface.





# L510

Transform your building with an explosion of color and immerse your passengers in an uplifting and playful environment. Featuring glass walls to create a clean, fresh space, the L510 cabin is recommended for residential and commercial uses, hospitals and hotels.

**Wall** Glass B123 White  
**Floor** Laminate 8630  
**Handrail** K2  
**Ceiling** O3



## Walls Glass



Y8W Yellow

K16 Orange

R3W Red



B123 White

YB9W Green

B14W Blue



# L530

Versatility and simplicity define the L530 cabin. Suitable for both commercial and residential uses, this cabin is ideal for luxury private residences, commercial buildings and offices. Choose from a multitude of materials and finishes, from sumptuous interiors of stainless steel, to sleek contemporary spaces, and create a truly unique space.

Wall Stainless Steel Satin  
Floor Artificial Granite  
Regal Black  
Handrail K2  
Ceiling O15



## Walls Stainless Steel



Mirror



Linen LU



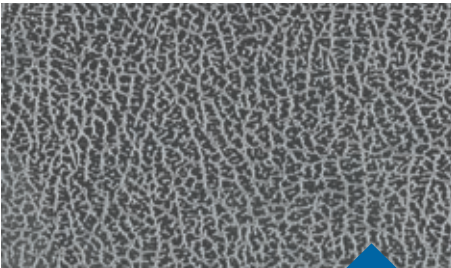
Gold Satin



Gold Mirror



Checks



12LG



Satin

Also available at  
**KLEEMANN Portal**

Colors may differ slightly from those shown in the brochure, owing to the limitations of the printing process.

Pictures of the materials illustrate detailed part of each material and not its rendering on the cabin surface.





# T120

The exclusive design of the T120 cabin offers the passenger comfort and style. The design seamlessly fuses contemporary and futuristic elements to deliver a warm and inviting space, ideal for residential uses, home solutions and hotels.

**Wall** Steel like Oceanic Blue  
**Floor** Vinyl Cement Block  
**Ceiling** O55



## Walls Wood like

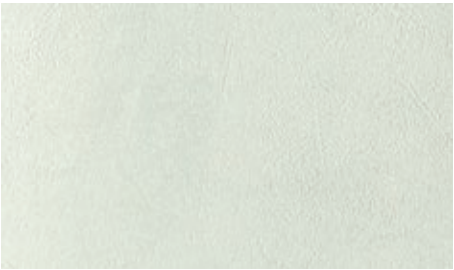


Smooth Sand



Hacienda Wood

## Concrete like



Lime Light

## Steel like



Oceanic Blue



# T310

Featuring unique design that creates a feeling of space through inspiring, vivid colors and a curved ceiling and walls, the passenger experiences a sense of freedom during each and every ride. The spaciousness of this cabin makes it ideal for use in commercial buildings.

Wall Paint White Utopia  
Floor Artificial Granite  
Regal White  
Handrail K2  
Ceiling OLP1 Led Panel



Designed by  
Andreas  
Zapatinas

## Walls Paint

Abstract Light	Reflex Grey	White Utopia	Liquid Pencil
Pale Code	Geoform	Venus Orbit	Violetik
Aqua Dome	Grey Flux	Deep Space	Dark Variant
Radical Black	Grizo	Stardust	Fiction Gold
Eclectic Bronze	Silvertone	Flashy Warm	Copper Swift





# T710

The T710 cabin fuses futuristic design with luxury to offer a truly exceptional passenger experience. The pioneering design, which features smooth lines and a curved ceiling and walls, welcomes the passenger to next-generation lift travel. The stylishly sleek cabin is the ideal choice for private residences, commercial buildings and hotels.

Wall Paint Geoform  
Floor Laminate 8096  
Handrail K2  
Ceiling O7

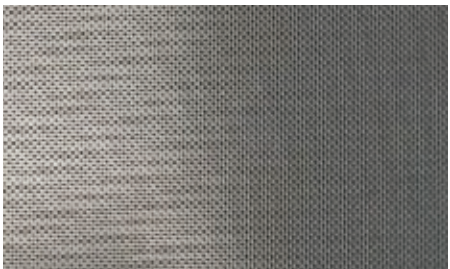


Designed by  
Andreas  
Zapatinas

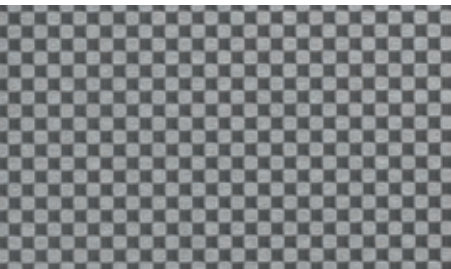
## Walls Stainless Steel



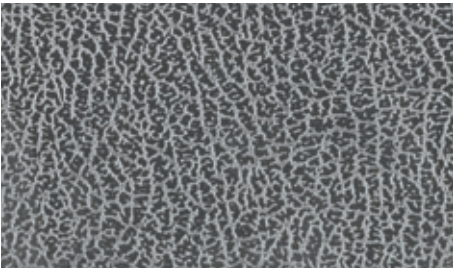
Mirror



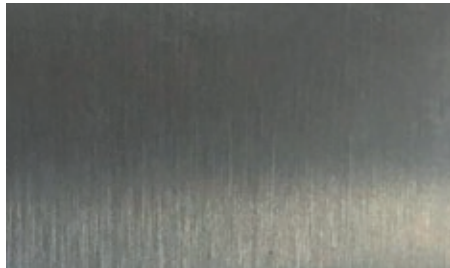
Linen LU



Checks



12LG



Satin



Gold Satin

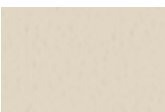


Gold Mirror

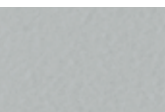
Colors may differ slightly from those shown in the brochure, owing to the limitations of the printing process.

Pictures of the materials illustrate detailed part of each material and not its rendering on the cabin surface.

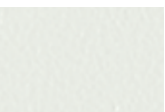
## Paint



Abstract Light



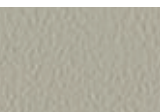
Reflex Grey



White Utopia



Liquid Pencil



Pale Code



Geoform



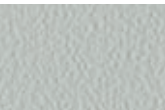
Venus Orbit



Violetik



Aqua Dome



Grey Flux



Deep Space



Dark Variant



Radical Black



Grizo



Stardust



Fiction Gold



Eclectic Bronze



Silvertone



Flashy Warm



Copper Swift

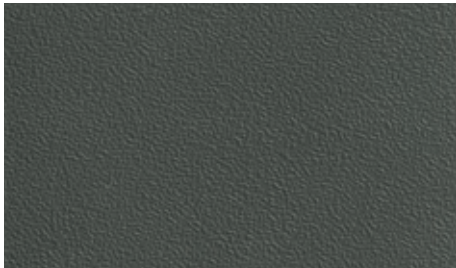




# Range

## Interior materials

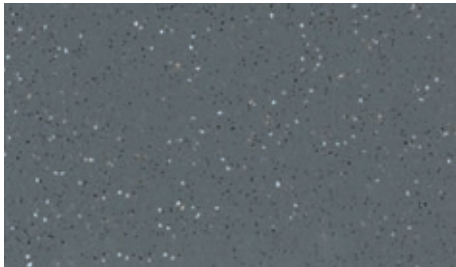
### Floors Rubbers



6727



6801

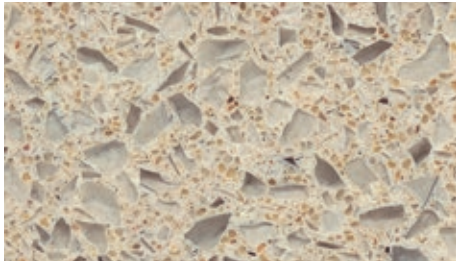


6768



MX19101

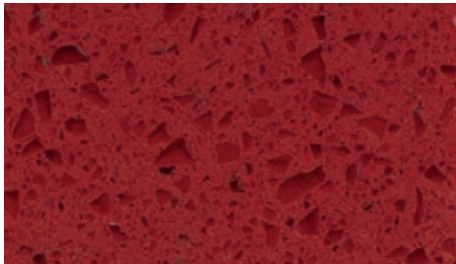
### Artificial Granites



Regal Beige



Regal Black



Regal Red



Regal White

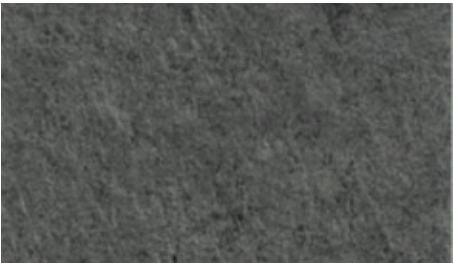
### Vinyl



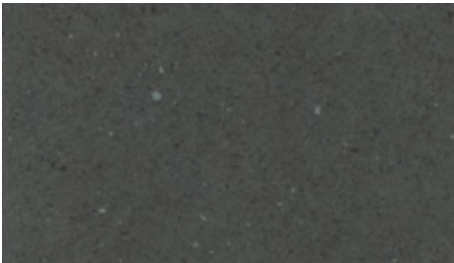
Concrete Module



Cement Block



Scivaro Grey



Dark Mineral



Oak Luxus



Mosaicon

### Ceramic Tiles



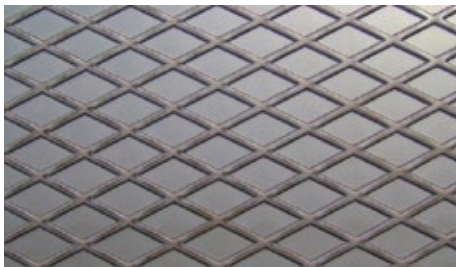
GP5 Nero

Colors may differ slightly from those shown in the brochure, owing to the limitations of the printing process.

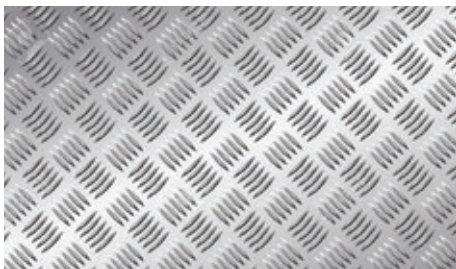
Pictures of the materials illustrate detailed part of each material and not its rendering on the cabin surface.



Stainless Steel  
Checkerplate



Aluminium  
Checkerplate



Handrails



K2  
AVAILABLE FINISHES  
Mirror  
Gold Satin



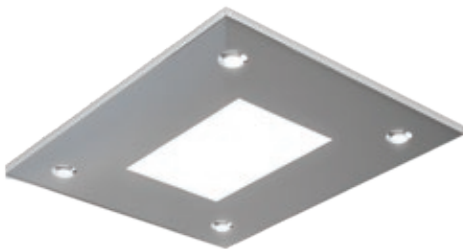
K3    According to EN81-70  
AVAILABLE FINISHES  
Mirror



K6  
AVAILABLE FINISHES  
Mirror

Ceilings

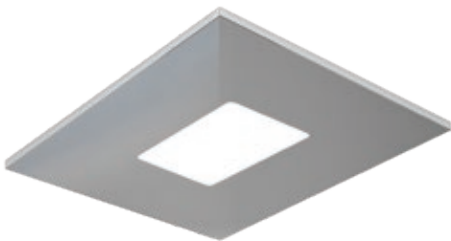
FINISHES  
Satin  
Mirror  
Gold Mirror  
Gold Satin  
Paint



O3



O7



O10



O14



O15



O55



OLP1 (Led Panel)



# Design options Doors





# Automatic doors



Automatic  
Big Vision

AVAILABLE FINISHES  
Stainless steel  
Skinplate



Automatic  
Full Glass

AVAILABLE FINISHES  
Stainless steel  
Skinplate



Automatic  
Full Inox

AVAILABLE FINISHES  
Stainless steel  
Skinplate  
Paint

Also available at  
**KLEEMANN Portal**

Colors may differ slightly from those shown in the brochure, owing to the limitations of the printing process.

Pictures of the materials illustrate detailed part of each material and not its rendering on the cabin surface.



# Semi-automatic doors



Classic



C310



C520



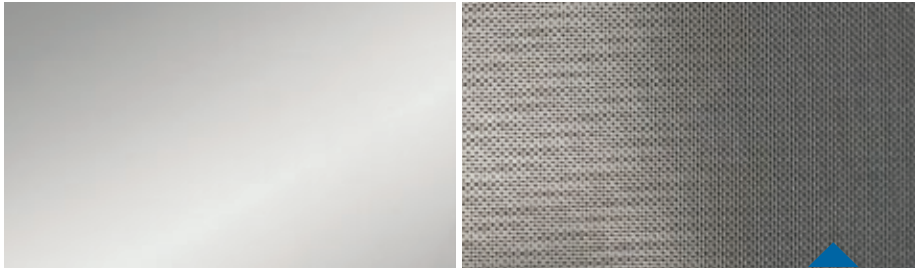
M310



Blind

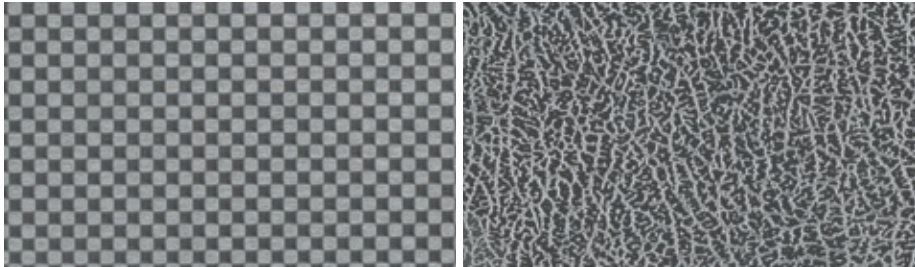
AVAILABLE FINISHES  
FOR ALL SEMI-AUTOMATIC DOORS  
Stainless steel  
Skinplate  
Paint

Finishes  
Stainless Steel



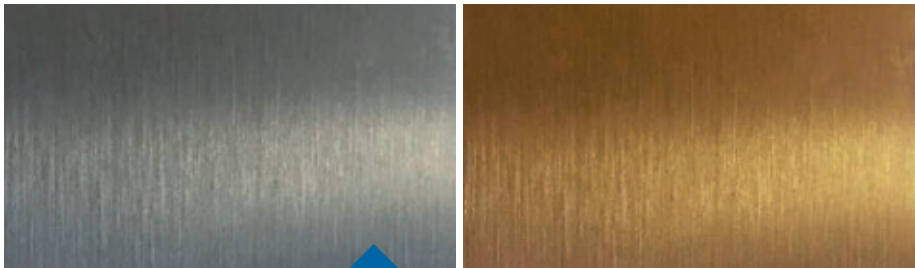
Mirror

Linen LU



Checks

12LG



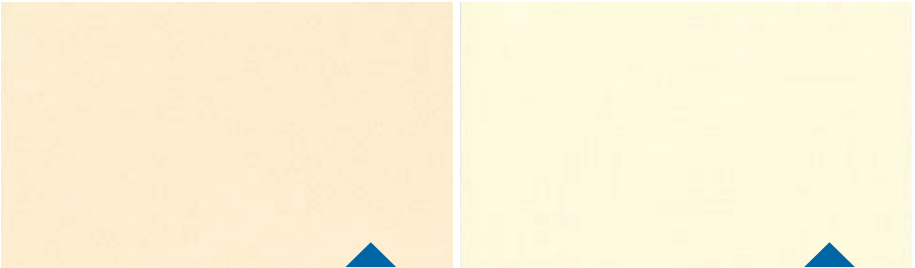
Satin

Gold Satin



Gold Mirror

Skinplate



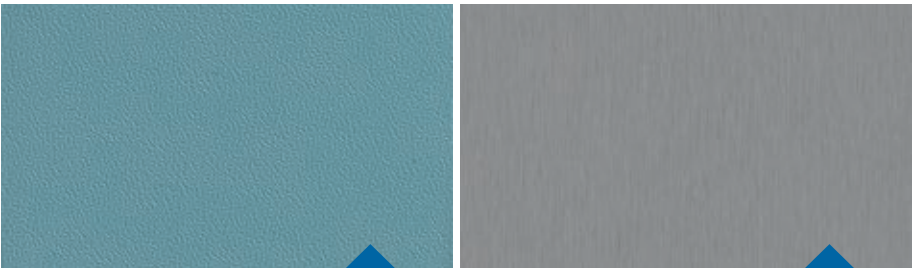
A67 SMA

A90 GTA



PPS13

PPS93



B13

F12PPS

Paint







# Design options Operating panels





# Flush Mounted



Landing Indicator

P95-902 DIMENSIONS  
(W) 230 mm x (D) 20 mm x (H) 92 mm



Car Operating Panel

AKC BES DIMENSIONS  
(W) 200 mm x (H) 2000 mm



Landing Operating Panel

AKL DIMENSIONS  
(W) 85 mm x (H) 265 mm

Also available at  
[KLEEMANN Portal](#)

Colors may differ slightly from those shown in the brochure, owing to the limitations of the printing process.

Pictures of the materials illustrate detailed part of each material and not its rendering on the cabin surface.

## Characteristics

- Available also with Dot Matrix display
- Compatible also with buttons B37R, MT-42, RT-42. Antibacterial and touchless buttons are also available
- Stainless steel finishing as standard (special upon request)
- Engrave in LOP as option



# Surface Mounted



Landing Indicator

GN-SH301 DIMENSIONS  
(W) 250 mm x (D) 22 mm (H) 87 mm



Car Operating Panel

GN-SC300 DIMENSIONS  
(W) 200 mm x (D) 24 mm (H) 1000 mm



Landing Operating Panel

GN-SL300 DIMENSIONS  
(W) 87 mm x (D) 22 mm (H) 250 mm

## Characteristics

- Available also with Dot Matrix display
- Compatible also with buttons B37R
- Black plexiglass finishing





# Surface Mounted



Landing Indicator

FTHL SLIM DIMENSIONS  
(W) 230 mm x (D) 10 mm x (H) 108 mm



Car Operating Panel

DKC DIMENSIONS  
(W) 200 mm x (D) 24 mm (H) 1000 mm



Landing Operating Panel

FTL INOX SLIM DIMENSIONS  
(W) 108 mm x (D) 10 mm x (H) 230 mm

Also available at  
**KLEEMANN Portal**

Colors may differ slightly from those shown in the brochure, owing to the limitations of the printing process.

Pictures of the materials illustrate detailed part of each material and not its rendering on the cabin surface.

## Characteristics

- Available also with TFT display
- Compatible also with buttons B37R
- Black plexiglass finishing



# Door Frame



Door frame solution with no display



Door Frame AKL001



Door Frame AKL002



Door frame solution with display



Door Frame AKL101



Door Frame AKL102

Also available at  
**KLEEMANN Portal**

Colors may differ slightly from those shown in the brochure, owing to the limitations of the printing process.

Pictures of the materials illustrate detailed part of each material and not its rendering on the cabin surface.



# Buttons



B37Q  
according to EN81-70

DIMENSIONS  
(W) 37 mm x (H) 37 mm



MT42

DIMENSIONS  
(W) 39 mm x (Y) 39 mm



MT42  
according to EN81-70

DIMENSIONS  
(W) 39 mm x (Y) 39 mm



B37R  
according to EN81-70

DIMENSIONS  
ø 30 mm



RT42

DIMENSIONS  
ø 30 mm



RT42  
according to EN81-70

DIMENSIONS  
ø 30 mm

Also available at  
**KLEEMANN Portal**

Colors may differ slightly from those shown in the brochure, owing to the limitations of the printing process.

Pictures of the materials illustrate detailed part of each material and not its rendering on the cabin surface.

## Hygiene Line Solutions



COMPATIBLE ONLY

with AKC BES Car Operating Panels  
and AKL Landing Operating Panels



### Touchless buttons

An 100% antibacterial solution that operates by infrared induction which detects the call's activation.



### Anti-Bacterial buttons

Blue Line KLH-42R buttons with nano-silver coating, that can provide antibacterial and antifungal protection.







Custom  
Solutions





# Panoramic Cabins

Elevating the architectural style of any building by upgrading interior or exterior views. KLEEMANN fully customizable panoramic cabins are the ideal solution for hotels, shopping malls, office buildings and other active public spaces.



Curved Panoramic



Mushroom Panoramic



Polygonal Panoramic



Round Panoramic



Square Panoramic





# Customized Design Expertise

KLEEMANN enjoys a favorable worldwide reputation for its customized design expertise. With a wealth of experience gained from demanding projects, KLEEMANN excels in tailor-made solutions for unique requirements.

Alongside a diverse range of standardized cabins, KLEEMANN provides reliable, efficient, precise, and cost-effective responses to any specifications.

At KLEEMANN, a dedicated Design Team serves as the driving force behind the development of custom cabins for even the most challenging projects.

Our expert and creative designers, deliver innovative and tailor-made solutions that meet the unique requirements of each project, aiming to superior customer support and satisfaction, from initial inspiration to installation.







# KLEEMANN Design Package

The KLEEMANN design service package is a three-part process that promotes creative communication among all project stakeholders, allowing exploration of new design ideas, products, and materials to enhance overall performance and quality standards.



Real Project

- Analyzing and understanding the technical and aesthetic requirements of the project.
- Providing architectural collaboration and guidance in designing cabins, doors, operating panels and tiling of the lift.
- Creating customized proposals through 3D photorealistic renderings, to ensure that the final design meets the client's expectations



3D Rendering



KLEEMANN has a worldwide presence in over 100 countries with local presence in key market points. It stands out for its product range, high quality and control standards, world class design and for its expertise in custom made solutions. Constantly monitoring the global market trends, the company continues to innovate, grow, develop, and improve while consistently remaining in tune with its global character.



**KLEEMANN**  
Your 1<sup>st</sup> Choice in Lifts

KLEEMANN HELLAS SA  
Kilkis Industrial Area  
P.O. BOX 25, Kilkis, 611 00 - Greece  
G.E.M.I. 14486435000

Colors may differ slightly from those shown in the brochure, owing to the limitations of the printing process. Pictures of the materials illustrate detailed part of each material and not its rendering on the cabin surface.

While every effort has been made to ensure information accuracy, KLEEMANN bears no responsibility for typographic errors or omissions.