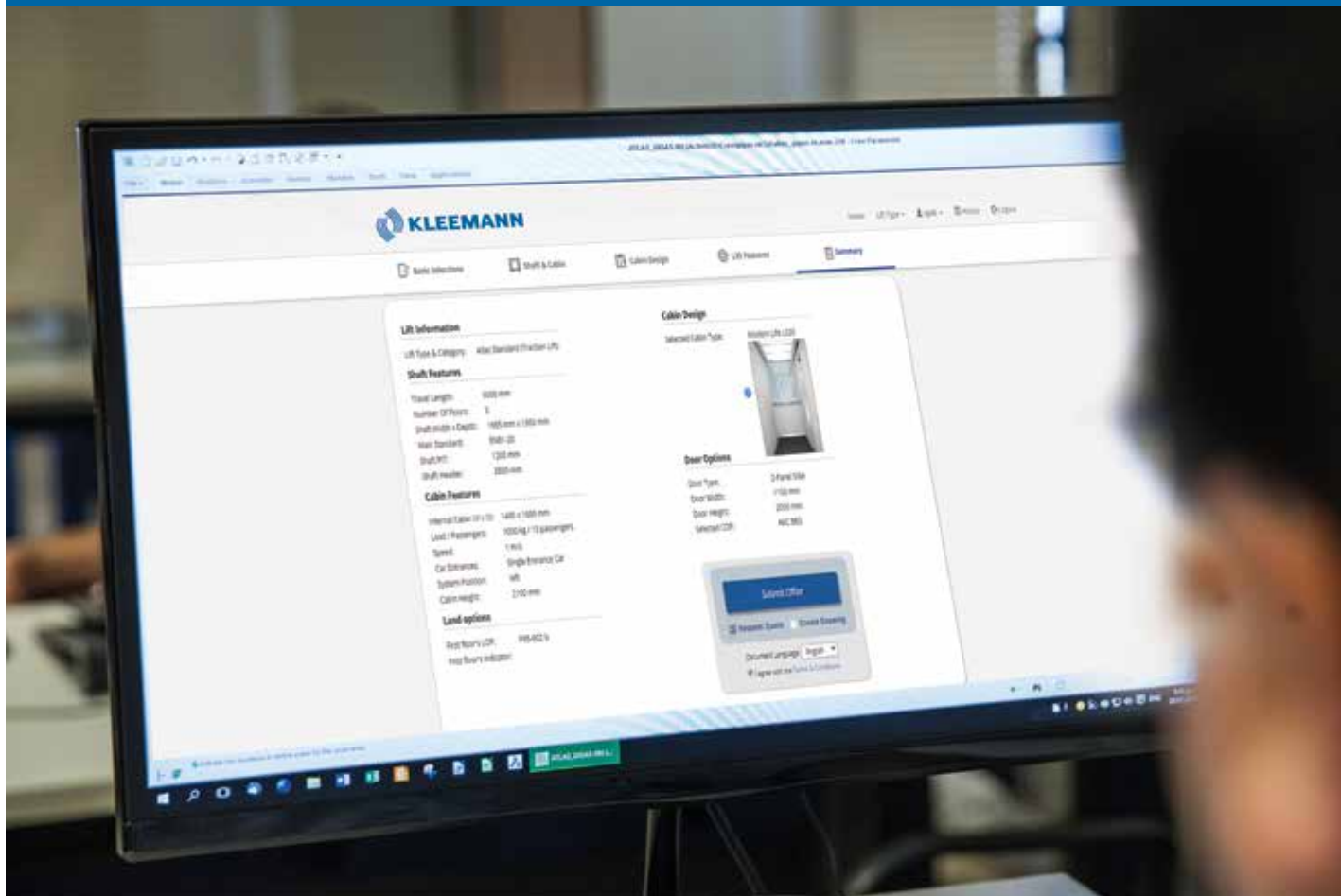


Portal options

Available solutions on KLEEMANN Portal



KLEEMANN Portal 02

Cabins Collection 05

Interior Materials 17

Operating Panels 21

Technical Specifications 24

Access KLEEMANN Portal from your
desktop, tablet or mobile device
to get quotes for our popular solutions.



Easy and fast procedure through KLEEMANN portal

KLEEMANN Portal has been designed and developed to facilitate the ordering process. The innovative online tool enables you to quickly and effortlessly order your lift online tailored to each project.

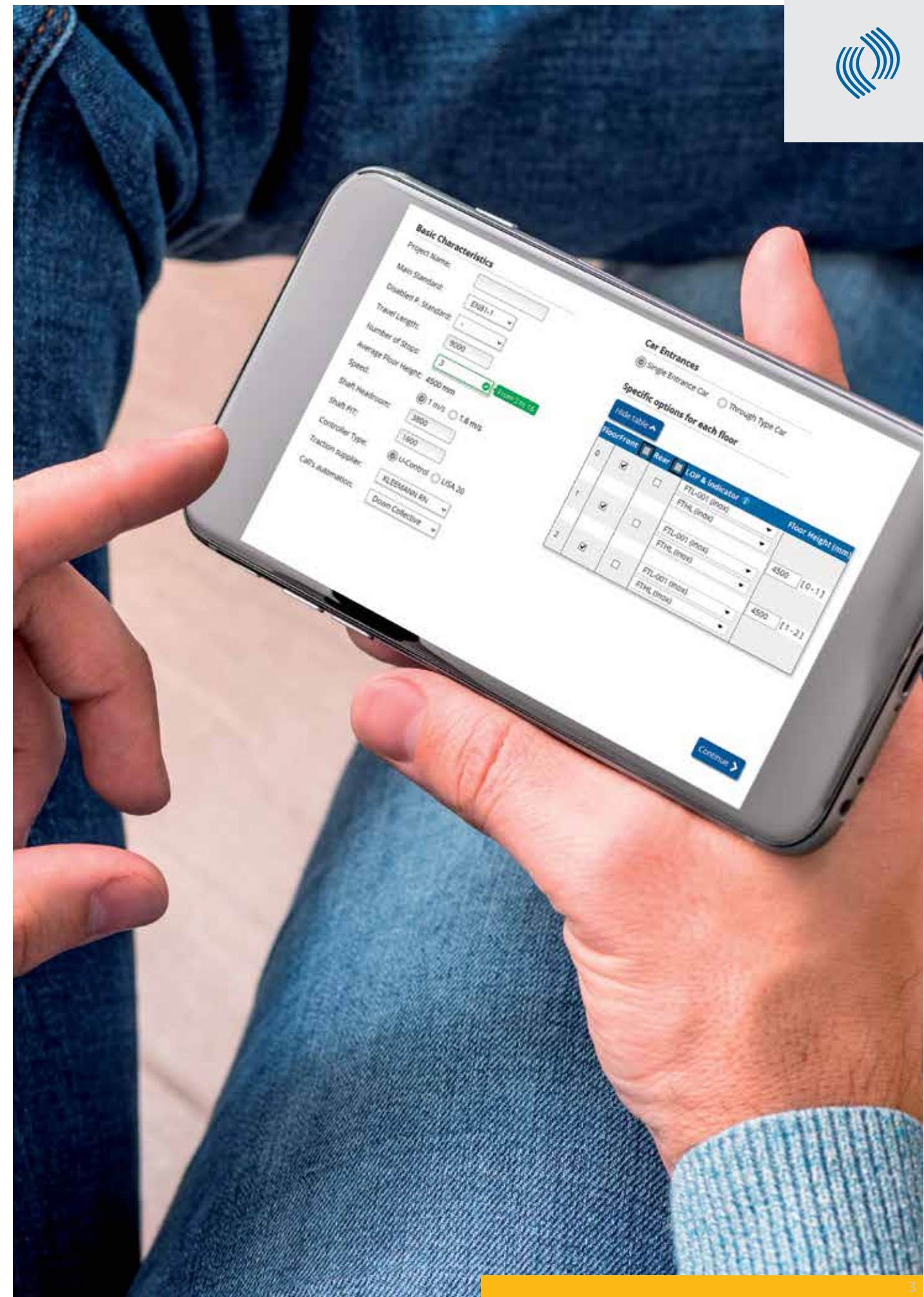
Contact your sales engineer to get access to the KLEEMANN Portal from your desktop, tablet or mobile device.

FEATURES

- Detailed designs and quotes.
- Integrated cabin design options. Real-time changes.
- Optimum solutions for the given dimensions of the shaft.
- Realistic 3-D plans and views. Real-time changes.
- Auto correction.
- Installation plans generated by the KLEEMANN Portal.

HIGHLIGHTS

- Offer available in 5 minutes.
- Planning data available in 10 minutes.
- Online order.
- Upgraded user experience.





CABINS COLLECTION



CLASSIC A310

The KLEEMANN Classic Athena A310 cabin is one of the most popular choices for a practical but elegant lift solution. Combining multiple design tools, create a cabin to your own design specifications and take advantage of a wide range of laminate walls, floor and ceiling options.

A great choice for residential uses and private residences, this cabin presents a versatile and cost-effective solution.



A310 | 1

Wall HP Laminate DU 8110
Floor Rubber 6801
Handrail K3
Ceiling O55

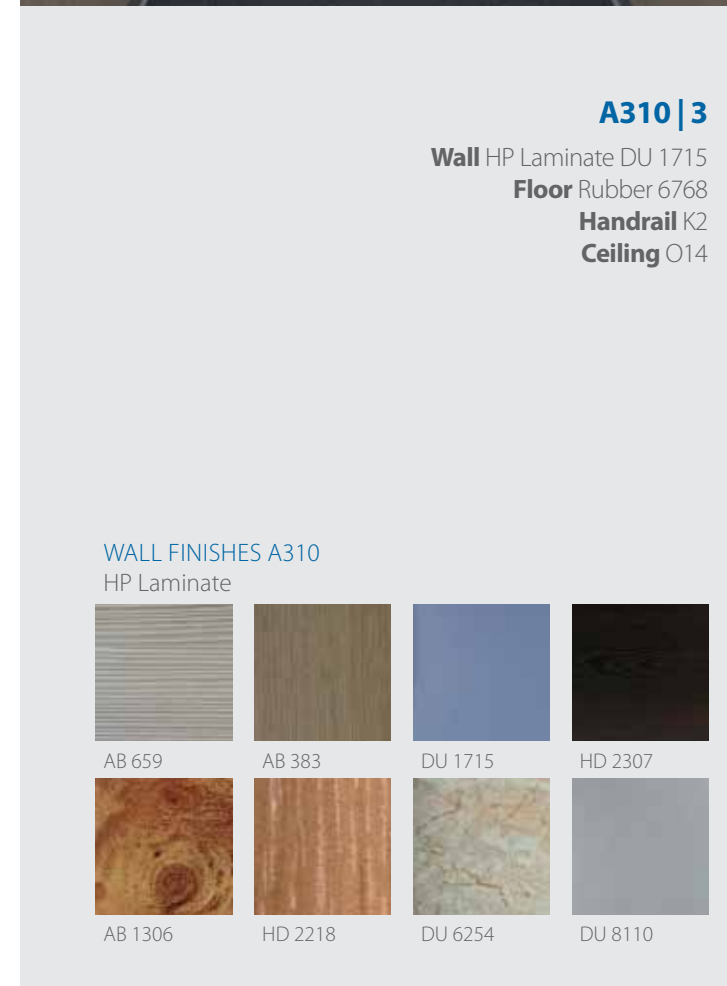
All options are in compliance with EN81.20

Colours may differ slightly from those shown in the manual owing to the limitations of the printing process



A310 | 2

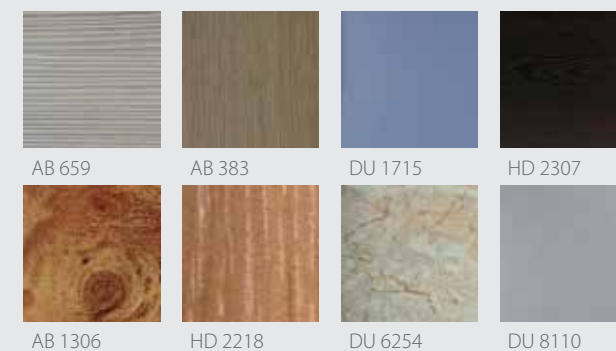
Wall HP Laminate AB 383
Floor Rubber 6727
Handrail K2
Ceiling O3



A310 | 3

Wall HP Laminate DU 1715
Floor Rubber 6768
Handrail K2
Ceiling O14

WALL FINISHES A310 HP Laminate





CLASSIC

A510

Sophistication and intellectual design define the KLEEMANN Classic Athena A510 cabin.

Available in a range of wooden walls and featuring elegant stainless steel detailing, such as the classic combination of polished oak veneer and stainless steel.

This cabin is ideal for commercial uses that demand a touch of finesse.



A510 | 1

Wall Wood veneer 10.32
(fire retardant)

Floor Artificial granite Regal White

Handrail K1

Ceiling 010

All options are in compliance
with EN81.20

Colours may differ slightly from those shown
in the manual owing to the limitations of the
printing process

A510 | 2

Wall Wood veneer 10.94
(fire retardant)

Floor Artificial granite Regal Beige

Handrail K1

Ceiling 03



A510 | 3

Wall Wood veneer 10.66
(fire retardant)

Floor Ceramic tile Greek Pentelikon

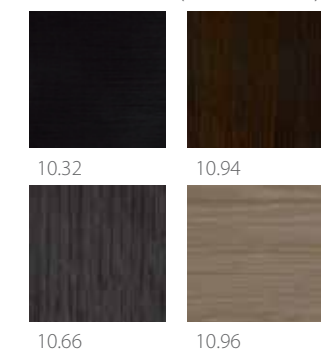
Handrail K1

Ceiling 015



WALL FINISHES A510

Wood veneer (fire retardant)





MODERN LIFE L310

The KLEEMANN Modern Life L310 cabin offers durability, simplicity and value for money. An ideal choice for all type of buildings, the popularity of this cabin lies in its functional but elegant design.

The popularity of this cabin lies in its functional but elegant design making it an ideal choice for all type of buildings.

Offering a range of ceiling and lighting solutions and built to last, this cabin is sure to complement the aesthetic and purpose of a range of commercial buildings.



L310 | 1

Wall Stainless steel Satin
Floor Rubber 6768
Handrail K2
Ceiling O14

All options are in compliance with EN81.20

Colours may differ slightly from those shown in the manual owing to the limitations of the printing process



L310 | 2

Wall Stainless steel B/A Linen
Floor Rubber 6727
Handrail K2
Ceiling O55



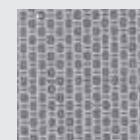
L310 | 3
Wall Stainless steel Checks
Floor Rubber 6801
Handrail K3
Ceiling O3

WALL FINISHES L310

Stainless steel



Mirror



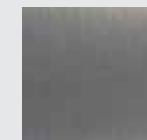
Linen B/A



Checks



12LG



Satin 441 or 304 Premium edition



L320 | 1

Wall Skinplate PPS F12

Floor Artificial granite Regal Black

Handrail K3

Ceiling 015

L320 | 2

Wall Skinplate PPS 13

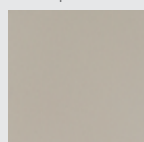
Floor Ceramic tile Greek Pentelikon

Handrail K3

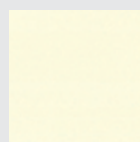
Ceiling O55

WALL FINISHES L320

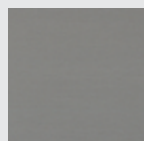
Skinplate



A67SMA



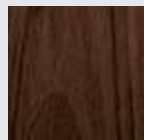
A90GTA



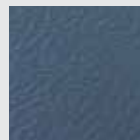
PPS F12



PPS13



PPS93



B13



MODERN LIFE

L320

Integrating simplicity and elegance, the KLEEMANN Modern Life L320 cabin is an excellent choice for a range of residential and industrial uses, home solutions, hospitals, hotels and offices.

Offering modest, functional and contemporary design alongside a wide range of materials and possibilities, this cabin provides a versatile and flexible solution for office buildings and institutions.



L320 | 3

Wall Skinplate A67SMA

Floor Ceramic tile GP5 Nero

Handrail K2

Ceiling O10

Colours may differ slightly from those shown in the manual owing to the limitations of the printing process

All options are in compliance with EN81.20



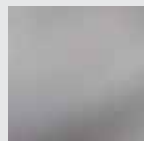
L530 | 1

Wall Stainless steel satin
Floor Artificial granite Regal Black
Handrail K2
Ceiling 015

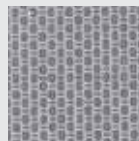
L530 | 2
Wall Stainless steel satin
Floor Artificial granite Regal White
Handrail K2
Ceiling 014

WALL FINISHES L530

Stainless steel



Mirror



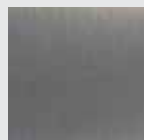
Linen B/A



Checks



12LG



Satin 441 or 304 Premium edition



MODERN LIFE

L530

Versatility and simplicity define the KLEEMANN Modern Life L530 cabin. Suitable for both commercial and residential uses, this cabin is ideal for luxury private residences, commercial buildings and offices. Choose from a multitude of materials and finishes, from sumptuous interiors of stainless steel mirrors, to sleek contemporary spaces, and create a truly unique space.



L530 | 3

Wall Stainless steel B/A Linen
Floor Artificial granite Regal Beige
Handrail K2
Ceiling 055

Colours may differ slightly from those shown in the manual owing to the limitations of the printing process

All options are in compliance with EN81.20



INTERIOR MATERIALS





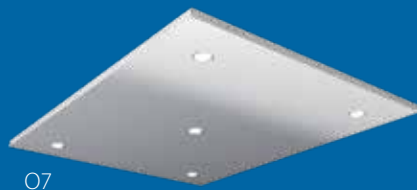
INTERIOR MATERIALS

Ceilings

Options for ceilings are available for all cabins.
All options are in compliance with EN81.20.



O3



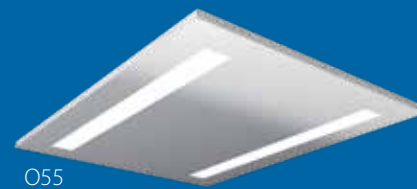
O7



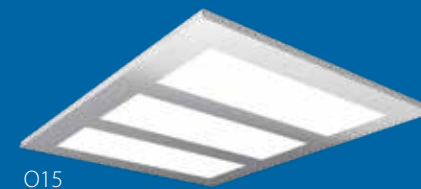
O10



O14



O55



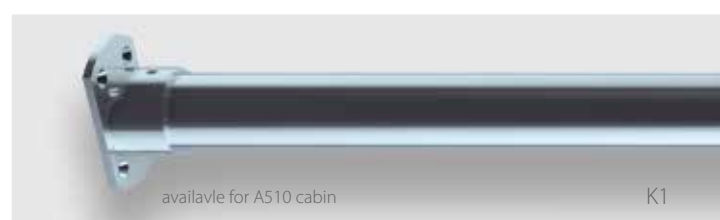
O15

Handrails

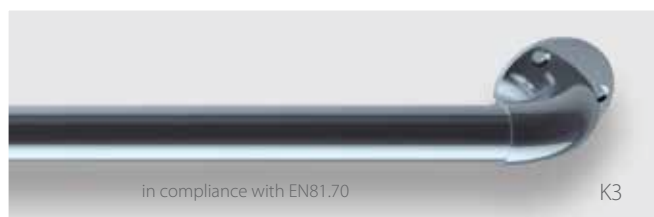
Options for handrails are available for all cabins exc. K1 which is available only for A510 cabin.
All options are in compliance with EN81.20.



K2



K1



K3

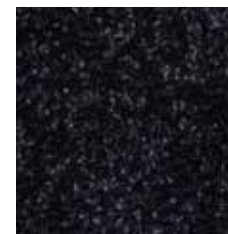


K6

Floors

Options for floors are available for all cabins.
All options are in compliance with EN81.20.

Rubber



6801



6768

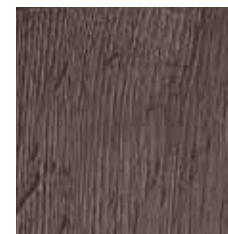


MX19101

Floor recess is also available

Colours may differ slightly from those shown in the manual owing to the limitations of the printing process

Laminates



8096

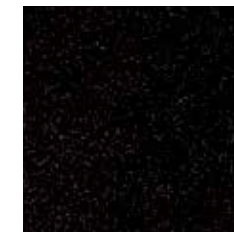


8630

Ceramic Tiles



GP10



GP5 Nero



Greek Pentelikon

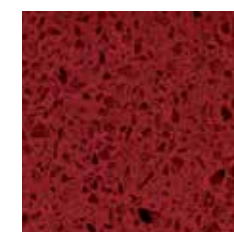
Artificial Granites



Regal Beige



Regal Black



Regal Red



Regal White



OPERATING PANELS

OPERATING PANELS

Car Operating Panels & indicators

Flush mounted



AKC BES/AKC BESL Dimensions
(W) 200 mm x (H) 2000 mm

Surface mounted



AKC SM BA Dimensions
(W) 225 mm x (D) 35 mm x (H) 1900 mm

*Available only with Genius20 Controller

Flush mounted indicator



P95-902

Surface mounted indicators



**FTHL INOX
FTHL Slim Dimensions
(W) 230 mm x (D) 10 mm x (H) 108 mm

WPY 910 VL



Landing Operating Panels & Doors

Surface mounted



FTL Dimensions
(W) 106 mm x (D) 25 mm x (H) 250 mm

FTL Slim Dimensions
(W) 108 mm x (D) 10 mm x (H) 230 mm

** Slimmer versions of FTL and FTHL are available only with Genius20 Controller

Flush mounted



AKL 001, 002, 101 Dimensions
(W) 85 mm x (H) 180 mm

AKL-102 Dimensions
(W) 85 mm x (H) 230 mm

Door frame

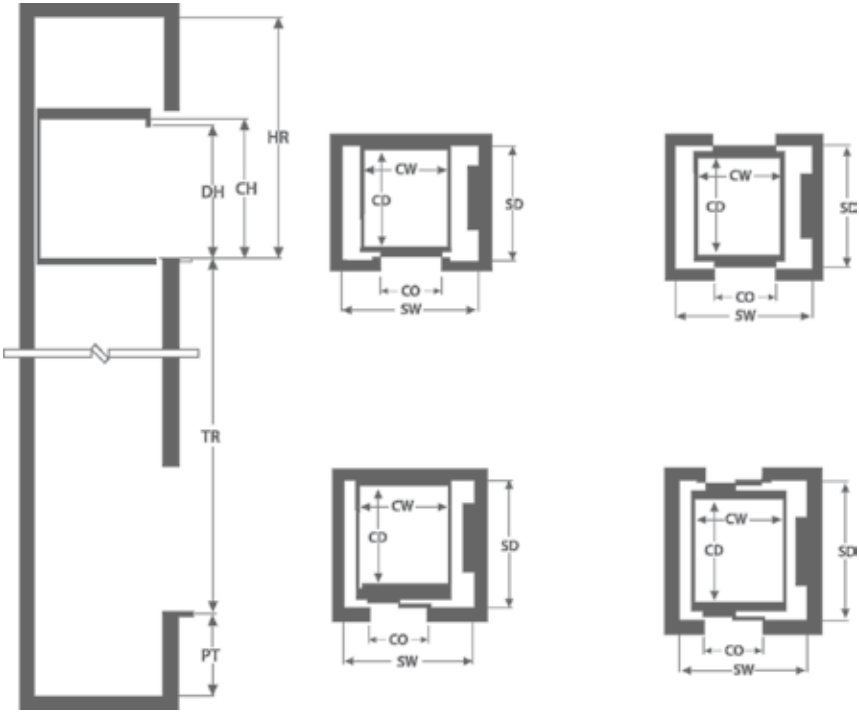




Technical Specifications

	Core Lift	Atlas Basic	Atlas Gigas	FlexyLIFT R
Rated Load (Kg)	450-1000	450-1000	1050-2500	450-1000
Suspension	2:1	2:1	2:1	1:2
Machine Room	MRL	MRL	MRL	MR-MRL-MRC
Max Travel (m)	30	65	45	18
Max Number of Stops	10	22	16	7
Max Speed (m/s)	1.0	1.6	1.75	0.74
Min Pit Depth (mm)	1100	v=1.0 m/s 1100 v=1.6 m/s 1300	v=1.0 m/s 1100 v=1.6 m/s 1270 v=1.75 m/s 1315	400 (MR) 1100 (MRL)
Min Headroom (mm)	3400	v=1.0 m/s 3400 v=1.6 m/s 3600	v=1.0 m/s 3800 v=1.6 m/s 4000 v=1.75 m/s 4060	2600
Complies with	Lifts Directive 2014/33/EU, European Standard EN81-20			

Plan Views



Planning Data

Atlas Basic							
SINGLE ENTRANCE	Rated Load	450Kg		630Kg		800Kg	
	Car dimensions (mm) CW x CD	1000x1250		1100x1400		1350x1400	
	Door type*	T2	C2	T2	C2	T2	C2
	Door CO (mm)	800	650	900	700	1000	800
	Shaft dimensions (mm) SW x SD	1500x1600	1500x1530	1600x1750	1600x1680	1850x1750	1850x1680

THROUGH - TYPE CAR	Rated Load	450Kg		630Kg		800Kg	
	Car dimensions (mm) CW x CD	1000x1250		1100x1400		1350x1400	
	Door type*	T2	C2	T2	C2	T2	C2
	Door CO (mm)	800	650	900	700	1000	800
	Shaft dimensions (mm) SW x SD	1500x1800	1500x1660	1600x1950	1600x1810	1850x1950	1850x1810

1000Kg			
1400x1600		1100x2100	
T2	C2	T2	C2
1100	800	900	700
1900x1950	1900x1880	1600x2450	1600x2380

1000Kg			
1400x1600		1100x2100	
T2	C2	T2	C2
1100	800	1000	800
1900x2150	1900x2010	1600x2650	1900x2510

*C2=2-panel central opening, T2=2-panel telescopic opening



Planning Data

SINGLE ENTRANCE

Atlas Gigas

Rated Load	1275Kg				1600Kg		1800Kg	
Car dimensions (mm) CW x CD	1200x2300		1400x2000		1400x2400		1600x2400	
Door type*	T2	C2	T2	C2	T2	C2	T2	C2
Door CO (mm)	1000	800	1200	900	1200	900	1300	1000
Shaft dimensions (mm) SW x SD	1900x2670	1900x2600	2100x2370	2100x2300	2100x2770	2100x2700	2300x2770	2300x2700

THROUGH - TYPE CAR

Rated Load	1275Kg				1600Kg		1800Kg	
Car dimensions (mm) CW x CD	1200x2300		1400x2000		1400x2400		1600x2400	
Door type*	T2	C2	T2	C2	T2	C2	T2	C2
Door CO (mm)	1000	800	1200	900	1200	900	1300	1000
Shaft dimensions (mm) SW x SD	1900x2850	1900x2710	2100x2550	2100x2410	2100x2950	2100x2810	2300x2950	2300x2810

2000Kg		2500Kg			
1500x2700		2100x2300		1800x2700	
T2	C2	T2	C2	T2	C2
1200	1000	1600	1300	1400	1100
2200x3070	2200x3000	2800x2670	2800x2600	2500x3070	2500x3000
2000Kg		2500Kg			
1500x2700		2100x2300		1800x2700	
T2	C2	T2	C2	T2	C2
1200	1000	1600	1300	1400	1100
2200x3250	2200x3110	2800x2850	2800x2710	2500x3250	2500x3110

SINGLE ENTRANCE	FlexyLIFT R							
	Rated Load		450Kg		630Kg		1000Kg	
	Car dimensions (mm) CW x CD		1000x1250 (MR)	1000x1250 (MRL)	1100x1400 (MR)	1100x1400 (MRL)	1400x1600 (MR)	1100x2100 (MR/MRL)
	Door type*		T2	T2	T2	T2	T2	T2
	Door CO (mm)		850	800	900	900	1000	900
THROUGH - TYPE CAR	Shaft dimensions (mm) SW x SD		1450x1625	1550x1650	1600x1775	1600x1775	1900x1975	1600x2475
	Rated Load		450Kg	630Kg	1000Kg			
	Car dimensions (mm) CW x CD		1000x1250 (MR)	1100x1400 (MR)	1400x1600 (MR)		1100x2100 (MR)	
	Door type*		T2	T2	T2		T2	
	Door CO (mm)		850	900	1000		900	
	Shaft dimensions (mm) SW x SD		1550x1800	1600x1950	1900x2150		1600x2650	

*C2=2-panel central opening, T2=2-panel telescopic opening



Order Core Lift only online at KLEEMANN portal

A simple and cost-efficient solution
that minimizes the ordering process

KLEEMANN is making things easier for you with Core Lift.
A complete lift solution with the quality you want, at a really
great price! A lift right at the core of your needs, ready and easy
to order through our portal.



Smart Price Online



Easy to Order



Fast Delivery Time



Available Only Online



A310

WALL FINISHES HP Laminate



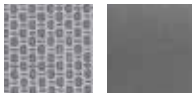
AB 659 AB 383 DU 6254 DU 8110

A310 | Wall HP Laminate DU 8110
Floor Rubber 6801, Handrail K3, Ceiling O55



L310

WALL FINISHES Stainless Steel



Linen B/A Satin

L310 | Wall Stainless steel B/A Linen
Floor Rubber 6727, Handrail K2, Ceiling O55



L320

WALL FINISHES Skinplate



A67SMA F12PP PPS13

L320 | Wall Skinplate A90GTA
Floor Rubber 6801, Handrail K3, Ceiling O7

Material options

CEILING



O55

O7

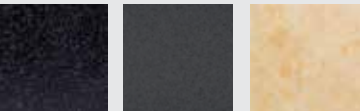
HANDRAILS



K3

K2

FLOORS Rubber*



6801

6768

MX19101

Operating Panels

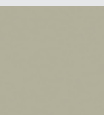


Landing Operating Panel
Door Frame AKL 101

Automatic Door



Door finishes



RAL 7032



Satin

*Floor recess
is also available

Material, operating panels
and floor options are available
for all cabins.
All options are in compliance
with EN81.20.

Colours may differ slightly from
those shown in the manual owing
to the limitations of the printing
process

Planning Data

SINGLE ENTRANCE	Rated Load	450Kg	630Kg	1000Kg	
	Car dimensions (mm) CW x CD	1000x1250	1100x1400	1400x1600	1100x2100
	Door type*	T2	T2	T2	T2
	Door CO (mm)	800	900	1100	900
	Shaft dimensions (mm) SW x SD	1550x1750	1600x1800	1950x1950	1600x2450

THROUGH - TYPE CAR	Rated Load	450Kg	630Kg	1000Kg	
	Car dimensions (mm) CW x CD	1000x1250	1100x1400	1400x1600	1100x2100
	Door type*	T2	T2	T2	T2
	Door CO (mm)	800	900	1100	900
	Shaft dimensions (mm) SW x SD	1550x1800	1600x1950	1950x2150	1600x2650

*C2=2-panel central opening, T2=2-panel telescopic opening


kleemannlifts.com

While every effort has been to ensure the accuracy of the information in this brochure, KLEEMANN assumes no responsibility for omissions or typographical errors. Images are for demonstration purposes only. They are not suitable for construction/building purposes, nor feasibility studies.

Copyright © KLEEMANN 2019

