

Options for your cabin design: ⓘ

Cabin door

Cabin floor

Rubber Floors



Artificial Granites



Floor Laminate



Cabin ceiling

Cabin walls

Hand rail

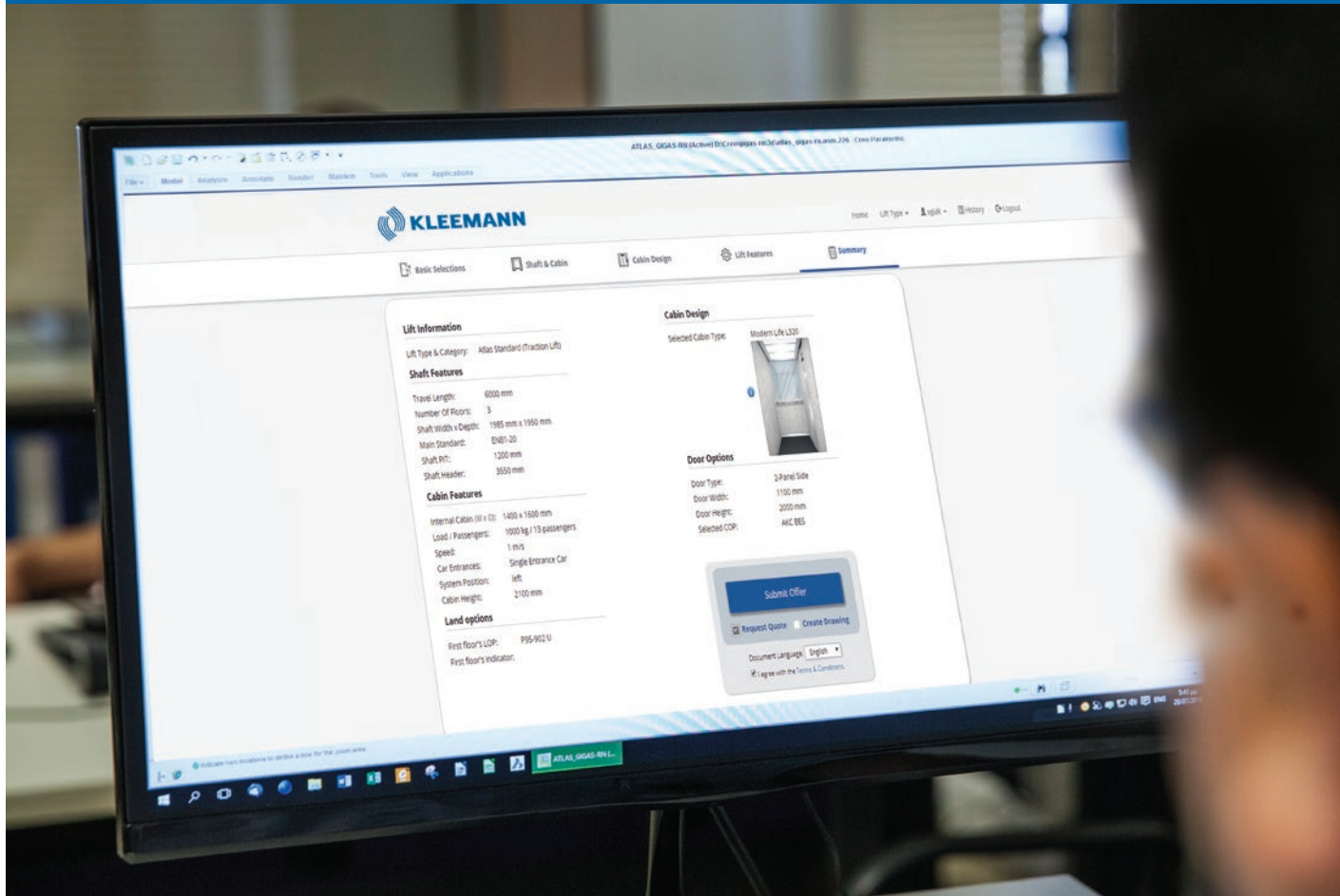
Mirror



Continue >

# Portal options

Available solutions on KLEEMANN Portal



KLEEMANN Portal 02

Cabins Collection 05

Interior Materials 19

Operating Panels 23

Technical Specifications 26

Core Lift 27

Access KLEEMANN Portal from your desktop, tablet or mobile device to get quotes for our popular solutions.



# Easy and fast procedure through KLEEMANN Portal

KLEEMANN Portal has been designed and developed based on customers needs. The innovative online tool that allows users to quickly and easily create detailed designs, receive quotes and order lifts tailored to any project.

Contact your sales department to get access to the KLEEMANN Portal from your desktop, tablet or mobile device.

## FEATURES

- Detailed designs and quotes.
- Integrated cabin design options. Real-time changes.
- Optimum solutions for the given dimensions of the shaft.
- Realistic 3-D plans and views. Real-time changes.
- Auto correction.
- Installation plans generated by the KLEEMANN Portal.
- Responsive web design

## HIGHLIGHTS

- Offer available in 5 minutes.
- Planning data available in 10 minutes.
- Online order.
- Upgraded user experience.





# CABINS COLLECTION



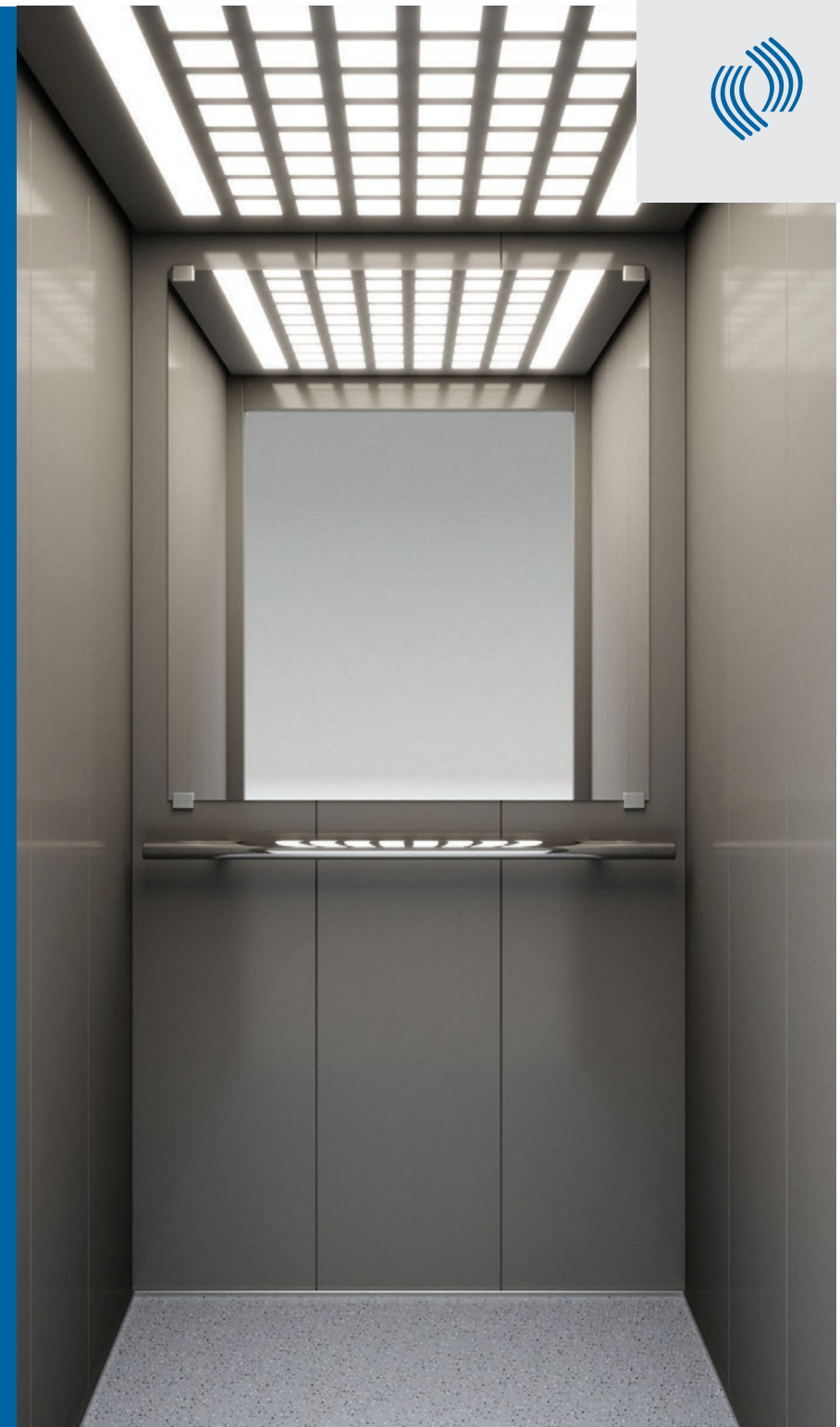
### PURITY | 1

**Wall** Stainless Steel Linen  
**Floor** Rubber 6727  
**Handrail** K3  
**Ceiling** 055

# PURITY

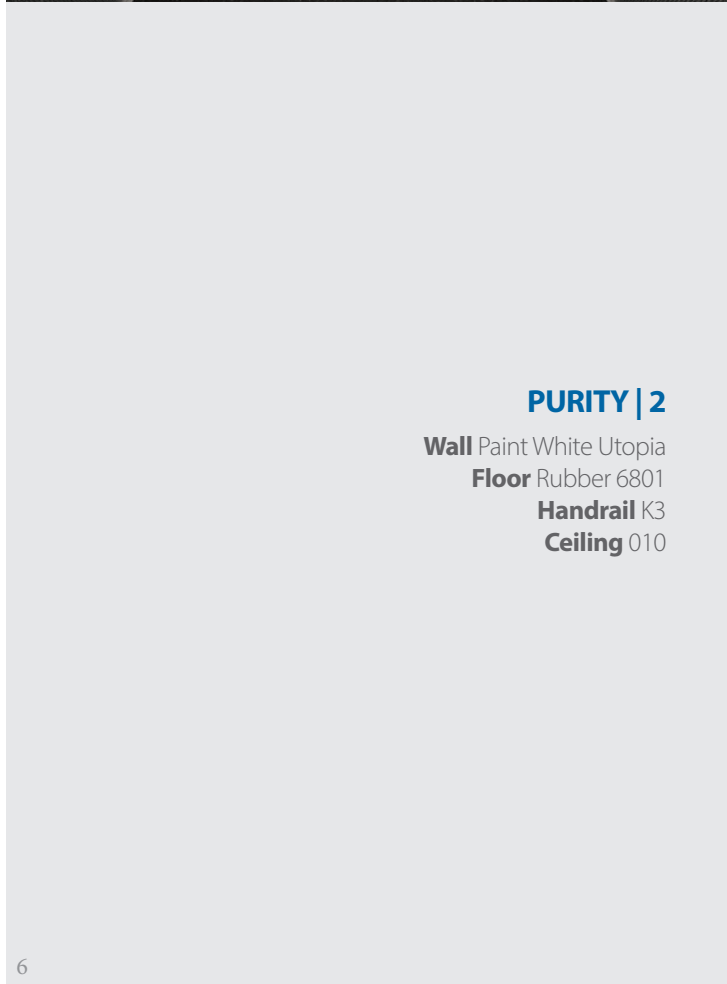
Purity cabin combines improved construction and upgrade of materials with simultaneous reduction of cost and installation time, creating the ideal solution for your project! Easy installation from inside the cabin, minimal design with no visible screws and new packaging that minimizes installation time are just few of the advantages that make Purity a high-quality cabin.

Purity is an upgraded version of L310, L320 and L330 cabins and saves you up to 20% of total installation time!



### PURITY | 3

**Wall** Skinplate F12 PPS  
**Floor** Artificial Granite Regal White  
**Handrail** K2  
**Ceiling** 014



### PURITY | 2

**Wall** Paint White Utopia  
**Floor** Rubber 6801  
**Handrail** K3  
**Ceiling** 010



Colours may differ slightly from those shown in the manual owing to the limitations of the printing process

All options are in compliance with EN81.20



# CLASSIC A310

The KLEEMANN Classic Athena A310 cabin is one of the most popular choices for a practical but elegant lift solution. Combining multiple design tools, create a cabin to your own design specifications and take advantage of a wide range of laminate walls, floor and ceiling options.

A great choice for residential uses and private residences, this cabin presents a versatile and cost-effective solution.



### A310 | 1

**Wall** HP Laminate DU 8110  
**Floor** Rubber 6801  
**Handrail** K3  
**Ceiling** O55

All options are in compliance with EN81.20

Colours may differ slightly from those shown in the manual owing to the limitations of the printing process



### A310 | 2

**Wall** HP Laminate AB 383  
**Floor** Rubber 6727  
**Handrail** K2  
**Ceiling** O3

**A310 | 3**

**Wall** HP Laminate AB 659  
**Floor** Rubber 6801  
**Handrail** K2  
**Ceiling** O15

WALL FINISHES A310  
HP Laminate

		
AB 659	AB 383	DU 1715
		
AB 1306	HD 2218	DU 8110





### A510 | 1

**Wall** Wood veneer 10.66  
(fire retardant)

**Floor** Rubber 6801

**Handrail** K2

**Ceiling** 010

## CLASSIC

# A510

Sophistication and intellectual design define the KLEEMANN Classic Athena A510 cabin.

Available in a range of wooden walls and featuring elegant stainless steel detailing, such as the classic combination of polished oak veneer and stainless steel.

This cabin is ideal for commercial uses that demand a touch of finesse.



### A510 | 2

**Wall** Wood veneer 10.94  
(fire retardant)

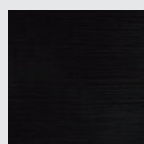
**Floor** Rubber 6801

**Handrail** K2

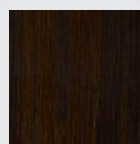
**Ceiling** 010

#### WALL FINISHES A510

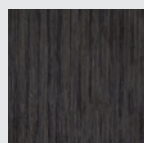
Wood veneer (fire retardant)



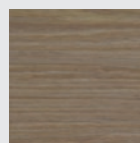
10.32



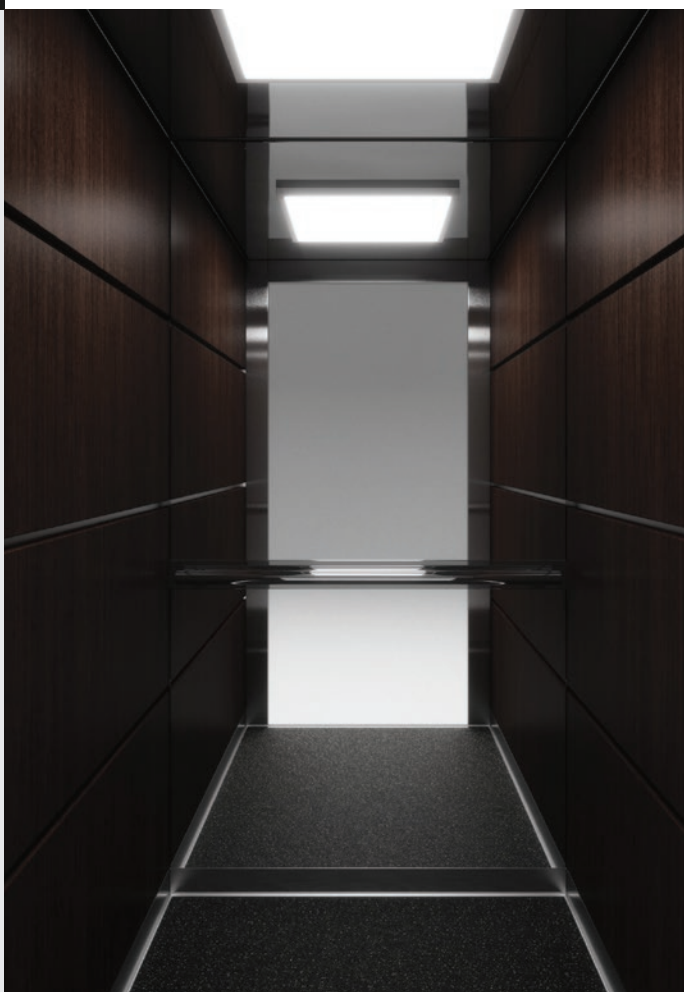
10.94



10.66



10.96



### A510 | 3

**Wall** Wood veneer 10.96  
(fire retardant)

**Floor** Rubber 6801

**Handrail** K2

**Ceiling** 010

Colours may differ slightly from those shown in the manual owing to the limitations of the printing process

All options are in compliance with EN81.20



MODERN  
LIFE

L310

The KLEEMANN Modern Life L310 cabin offers durability, simplicity and value for money. An ideal choice for all type of buildings, the popularity of this cabin lies in its functional but elegant design.

The popularity of this cabin lies in its functional but elegant design making it an ideal choice for all type of buildings.

Offering a range of ceiling and lighting solutions and built to last, this cabin is sure to complement the aesthetic and purpose of a range of commercial buildings.



**L310 | 1**

**Wall** Stainless steel Satin  
**Floor** Rubber 6768  
**Handrail** K2  
**Ceiling** O14

All options are in compliance with EN81.20

Colours may differ slightly from those shown in the manual owing to the limitations of the printing process




**L310 | 2**

**Wall** Stainless steel B/A Linen  
**Floor** Rubber 6727  
**Handrail** K2  
**Ceiling** O55

**L310 | 3**  
**Wall** Stainless steel Checks  
**Floor** Rubber 6801  
**Handrail** K3  
**Ceiling** O3

WALL FINISHES L310

Stainless steel

	
Mirror	Linen B/A
	
Checks	12LG
	
Satin 441 or 304 Premium edition	



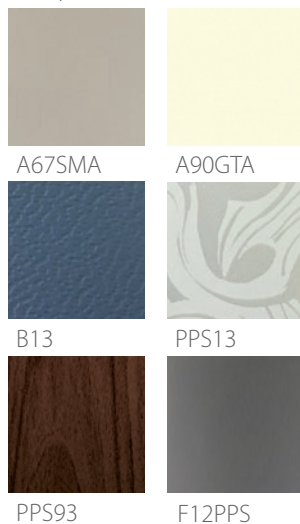




### L320 | 1

**Wall** Skinplate PPS 13  
**Floor** Ceramic tile Greek Pentelikon  
**Handrail** K3  
**Ceiling** O55

#### WALL FINISHES L320 Skinplate



## MODERN LIFE

# L320

Integrating simplicity and elegance, the KLEEMANN Modern Life L320 cabin is an excellent choice for a range of residential and industrial uses, home solutions, hospitals, hotels and offices.

Offering modest, functional and contemporary design alongside a wide range of materials and possibilities, this cabin provides a versatile and flexible solution for office buildings and institutions.



### L320 | 2

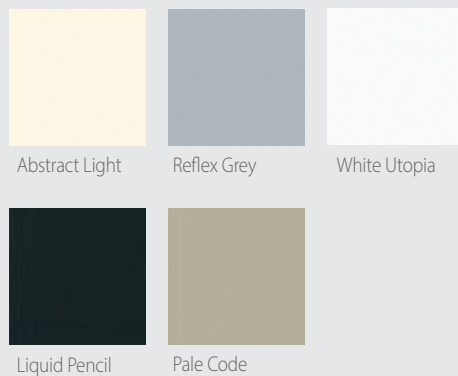
**Wall** Skinplate PPS F12  
**Floor** Artificial granite Regal Black  
**Handrail** K3  
**Ceiling** O15



### L330 | 1

**Wall** RAL 7032  
**Floor** Rubber 6801  
**Handrail** K3  
**Ceiling** O55

#### WALL FINISHES L330 Paint



Colours may differ slightly from those shown in the manual owing to the limitations of the printing process

All options are in compliance with EN81.20



# MODERN LIFE L530

Versatility and simplicity define the KLEEMANN Modern Life L530 cabin. Suitable for both commercial and residential uses, this cabin is ideal for luxury private residences, commercial buildings and offices.

Choose from a multitude of materials and finishes, from sumptuous interiors of stainless steel mirrors, to sleek contemporary spaces, and create a truly unique space.



### L530 | 1

**Wall** Stainless steel B/A Linen  
**Floor** Artificial granite Regal Beige  
**Handrail** K2  
**Ceiling** 055

All options are in compliance with EN81.20

Colours may differ slightly from those shown in the manual owing to the limitations of the printing process



### L530 | 2

**Wall** Stainless steel satin  
**Floor** Artificial granite Regal Black  
**Handrail** K2  
**Ceiling** 015

### L530 | 3

**Wall** Stainless steel satin  
**Floor** Artificial granite Regal White  
**Handrail** K2  
**Ceiling** 014

#### WALL FINISHES L530

-  Stainless steel
-  Mirror
-  Linen B/A
-  Checks
-  12LG
-  Satin 441 or 304 Premium edition





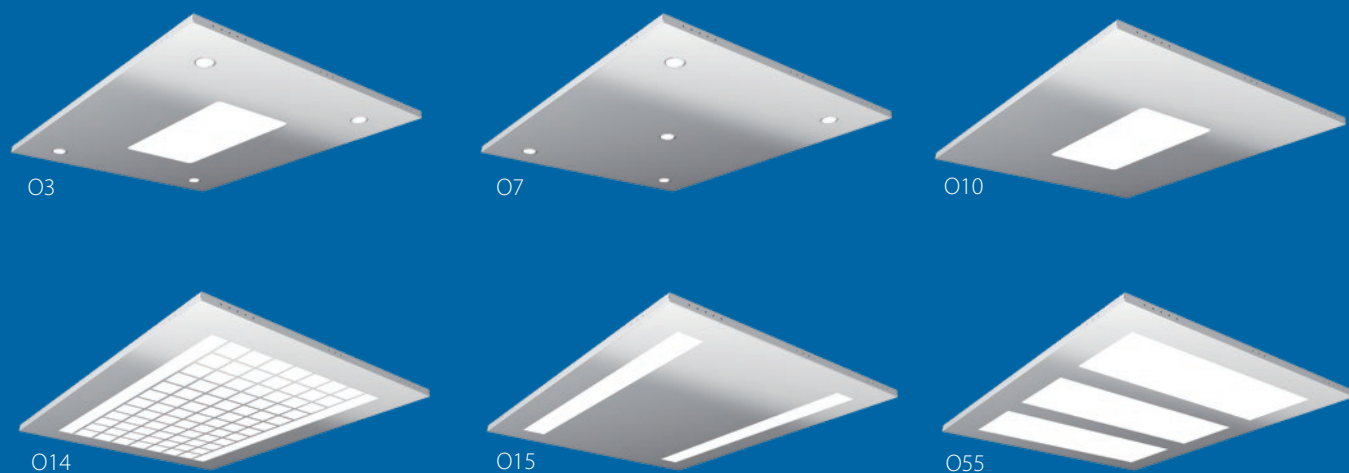
# INTERIOR MATERIALS



# INTERIOR MATERIALS

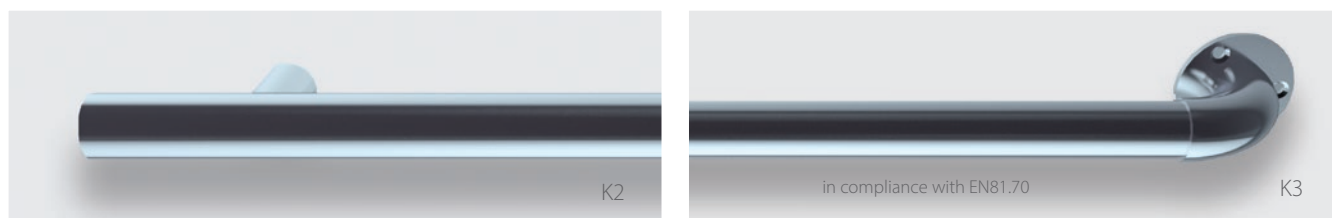
## Ceilings

Options for ceilings are available for all cabins.  
All options are in compliance with EN81.20.



## Handrails

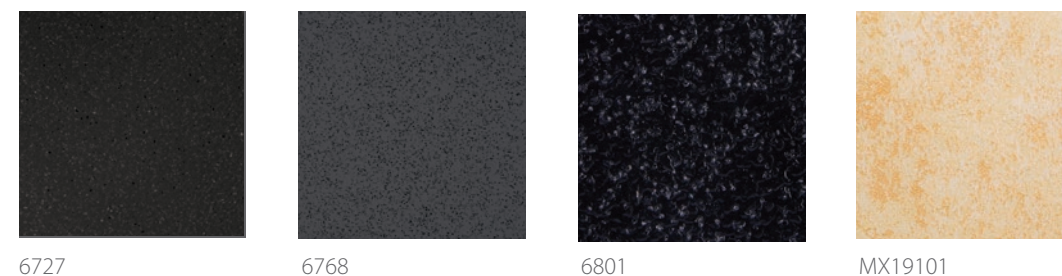
Options for handrails are available for all cabins exc. K1 which is available only for A510 cabin.  
All options are in compliance with EN81.20.



## Floors

Options for floors are available for all cabins.  
All options are in compliance with EN81.20.

### Rubber

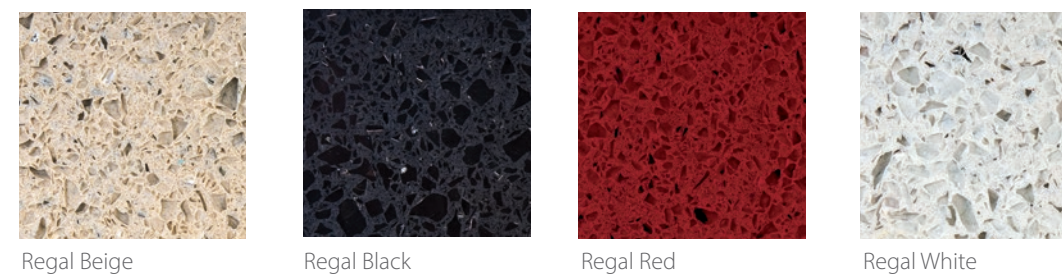


Floor recess is also available  
Colours may differ slightly from those shown in the manual owing to the limitations of the printing process

### Laminates



### Artificial Granites





# OPERATING PANELS





# OPERATING PANELS

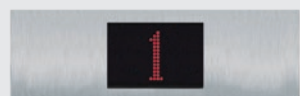
## Car Operating Panels & indicators

### Flush mounted



AKC BES Dimensions  
(W) 200 mm x (H) 2000 mm

### Flush mounted indicator



P95-902  
P95-902 Dimensions  
(W) 230 mm x (D) 20 mm x (H) 92 mm

### Surface mounted



DKC Dimensions  
(W) 200 mm x (D) 24 mm (H) 1000 mm

### Surface mounted indicators



FTHL Slim  
FTHL Slim Dimensions  
(W) 230 mm x (D) 10 mm x (H) 108 mm

WPY 910 VL  
WPY 910 VL Dimensions  
(W) 220 mm x (D) 70 mm x (H) 143 mm

## Landing Operating Panels & Buttons

### Surface mounted



FTL Inox Slim Dimensions  
(W) 108 mm x (D) 10 mm x (H) 230 mm

### Flush mounted



AKL Dimensions  
(W) 85 mm x (H) 265 mm

### Door frame



### Buttons



# Available lifts through KLEEMANN Portal

## Technical Specifications

	Core Lift	Atlas Basic	Atlas Gigas R	Atlas RPH R	FlexyLIFT R
Lift Type	Traction	Traction	Traction	Traction	Hydraulic
Rated Load (Kg)	450-1000	450-1000	1275-2500	630-1050	450-1000
Machine Room (1)	MRL	MRL	MRL	MRL	MR-MRC
Max Travel (m)	30	65	45	40	18
Max Number of Stops	10	18	16	16	7
Max Speed (m/s)	1,0	1,6	1,0	1,0	0,74
Min Pit Depth (mm)	1100	v=1.0 m/s 1100 v=1.6 m/s 1300	1100	400	400
Min Headroom (mm)	3400	v=1.0 m/s 3400 v=1.6 m/s 3600	3800	2700	2600
Cabin Internal Height (mm)	2100, 2200	2100, 2200	2100, 2200	2100, 2200	2070, 2170
Door type(2)	Automatic T2	Automatic T2, C2	Automatic T2, C2	Automatic T2	Automatic T2 / Semi-automatic
Main Standard	EN81-20	EN81-20, GOCT 33984.1-2016	EN81-20, GOCT 33984.1-2016	EN81-20, GOCT 33984.1-2016	EN81-20, EN81-21, GOCT 33984.1-2016
Complementary Standard	EN81-70:2018	EN81-70:2018	EN81-70:2018	EN81-70:2018	EN81-70:2018
Complies with	Lifts Directive 2014/33/EU				

(1) MR=Machine room, MRL=Machine roomless, MRC=Machine room cabinet  
 (2) C2=2-panel central opening, T2=2-panel telescopic opening



# Order Core Lift only online at KLEEMANN portal

A simple and cost-efficient solution that minimizes the ordering process

KLEEMANN is making things easier for you with Core Lift. A complete lift solution with the quality you want, at a really great price! A lift right at the core of your needs, ready and easy to order through our portal.



Smart Price Online



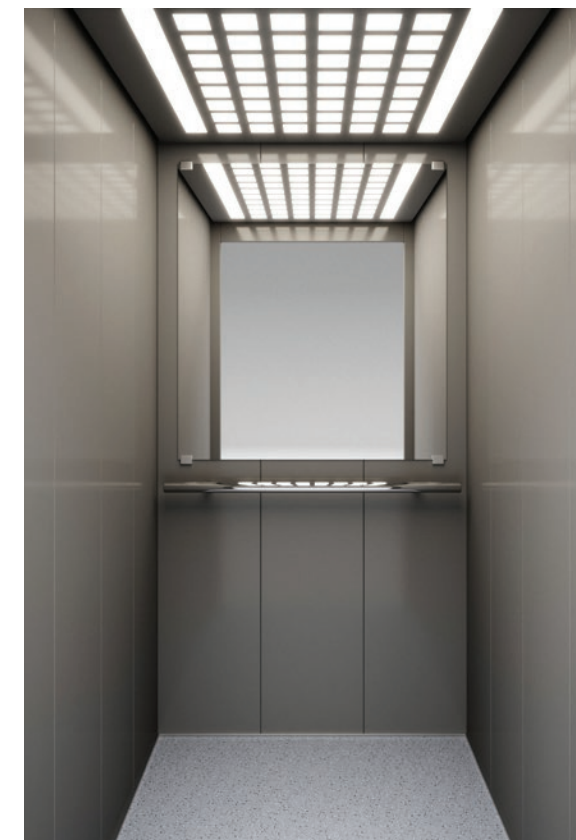
Easy to Order



Fast Delivery Time



Available Only Online



## Purity

WALL FINISHES Stainless Steel



Linen B/A Satin

Skinplate



A90GTA PPS13 F12PPS

Paint



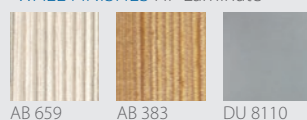
Abstract Light Reflex Grey White Utopia Liquid Pencil Pale Code

**Purity | Wall Skinplate** F12 PPS  
**Floor** Artificial Granite Regal White  
**Handrail** K2  
**Ceiling** O14



### A310

WALL FINISHES HP Laminate

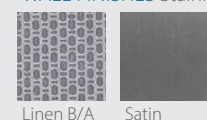


**A310** | Wall HP Laminate DU 8110  
Floor Rubber 6801, Handrail K3, Ceiling O55

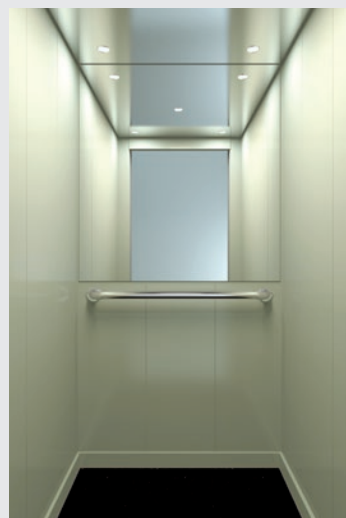


### L310

WALL FINISHES Stainless Steel



**L310** | Wall Stainless steel B/A Linen  
Floor Rubber 6727, Handrail K2, Ceiling O55



### L320

WALL FINISHES Skinplate

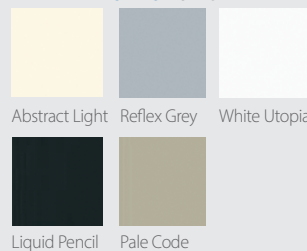


**L320** | Wall Skinplate A90GTA, Floor Rubber 6801, Handrail K3, Ceiling O7



### L330

WALL FINISHES Paint



**L330** | Wall Pale Code, Floor Rubber 6801, Handrail K3,  
Ceiling O55

## Material options

### CEILINGS

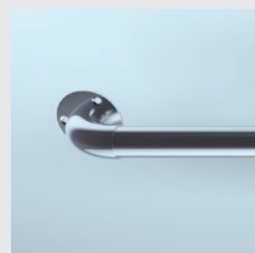


O55



O7

### HANDRAILS

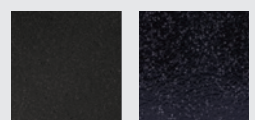


K3



K2

### FLOORS Rubber

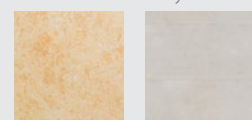


6727

6801

6768

### Vinyl



MX19101

Cement Block

Floor recess is available up to 20mm height

## Operating Panels



## Automatic Door



### Door finishes



Material, operating panels and floor options are available for all cabins. All options are in compliance with EN81.20.

Colours may differ slightly from those shown in the manual owing to the limitations of the printing process

## Planning Data

SINGLE ENTRANCE	Rated Load	450Kg	630Kg	1000Kg	
	Car dimensions (mm) CW x CD		1000x1250	1100x1400	1400x1600
Door type*		T2	T2	T2	T2
Door CO (mm)		800	900	1100	900
Shaft dimensions (mm) SW x SD		1550x1750	1600x1800	1950x1950	1600x2450

THROUGH - TYPE CAR	Rated Load	450Kg	630Kg	1000Kg	
	Car dimensions (mm) CW x CD		1000x1250	1100x1400	1400x1600
Door type*		T2	T2	T2	T2
Door CO (mm)		800	900	1100	900
Shaft dimensions (mm) SW x SD		1550x1800	1600x1950	1950x2150	1600x2650

\*C2=2-panel central opening, T2=2-panel telescopic opening



---

[kleemannlifts.com](http://kleemannlifts.com)

KLEEMANN HELLAS SA  
Kilkis Industrial Area,  
P.O. BOX 25, Kilkis, 611 00 - Greece  
G.E.MI. 14486435000

While every effort has been made to ensure the accuracy of the information in this brochure, KLEEMANN assumes no responsibility for omissions or typographical errors. Images are for demonstration purposes only. They are not suitable for construction/building purposes, nor feasibility studies.

Copyright © KLEEMANN 2021

