

For low-traffic buildings City 100



City 100 is the perfect combination of durability and functionality, making it an excellent choice for low-traffic buildings. Designed to ensure high performance, it features digital connectivity and is environmentally friendly, proving that an affordable solution can simultaneously meet every need for comfort, quality and aesthetics.

Upgrade your project with the highly durable and high-performance City 100. [Trust the KLEEMANN expertise and ensure added value for your project.](#)



Contents

OVERVIEW	4	DESIGN OPTIONS	15
City 100	4	Purity S	16
		Purity C	17
		Interior materials & Operating panels	18
ADVANTAGES	9		
Sustainable design & energy efficiency	10	KEY FEATURES & PLANNING DATA	23
Digital connectivity	12	Product fact sheet	24
		Planning data	26

City series by KLEEMANN

The next generation
of traction MRL lifts

With the City series, you can explore a whole range of advantages, including space savings, rapid installation, reduced total cost of ownership, energy efficiency, remote monitoring, as well as a smooth and safe ride.

City 100	City 300	City 400
For low-rise & low-traffic buildings	For mid-rise & mid-traffic residential & commercial buildings	For mid-rise & high-traffic commercial buildings



City 100

Durable, functional and sustainable, this top-tier machine-room-less (MRL) elevator perfectly combines outstanding design, high performance, and digital connectivity, ensuring quality and added value for your project.



Technical specifications

Model	City 100
Rated load (Kg)	320- 400- 450- 630-1000
Max travel (m)	21
Max number of stops	8
Max speed (m/s)	1,0
Max persons	13
Min pit depth (mm)	1000
Min headroom (mm)	3300
Complies with	Lifts directive 2014/33/EU

Recommended uses

Low-traffic & low-rise buildings





Description
& features

City 100 offers a long lifespan at the lowest total ownership cost, thanks to its robust and efficient construction. The design of the City 100 aligns with modern practices, contributing to building sustainability and reducing its carbon footprint. Its design and features make it a top-tier and cost-effective choice for low-traffic buildings.

Value-driven Engineering

City 100 combines durability and functionality thanks to its standardized design. With a focus on precision engineering, it offers maximum strength while reducing total ownership cost. It focuses on key performance features, ensuring an affordable price and reliable operation.

Eco-friendly design

City 100 with its lightweight structure and sustainable packaging, is a perfect choice for eco-friendly building practices. It uses no welding and makes minimal use of painting, while also require less energy to operate than a heavier MRL elevator.

Digital connectivity

City 100 merges the power of cutting-edge digital tools like KLEEMANN Live and Lift Control for remote elevator control via mobile. Take advantage of digital convenience by ordering your City 100 lift exclusively through our online KLEEMANN Portal.

Extra features
& upgrades

KLEEMANN LIVE	ECO-FRIENDLY LIFT





Advantages City 100

Sustainable design & energy efficiency

City 100 sets the standard for energy efficiency and environmental management, achieving top marks with ISO 25745-2 and VDI 4707-1 standards. This recognition underscores our commitment to superior energy management and environmental conservation. The eco-friendly design of City 100 meets the criteria of the BREEAM and LEED assessment methods. Our primary goal is to create solutions that are sustainable and help reduce the environmental footprint of buildings. City 100 was designed based on this philosophy.

Attributes

Energy efficiency

City 100 incorporates energy-efficient features like standby mode and LED lighting, offering up to 40% energy savings compared to traditional lifts for low-traffic buildings.

Sustainable materials & design

Constructed with eco-friendly materials and designed without the need for welding and with minimal use of paint, City 100 avoids the use of hazardous substances, reinforcing our commitment to environmental protection.

Reduced CO₂ emissions

Thanks to the smart design and lighter packaging, the standard 8-person, 5-stop City 100 is significantly lighter than previous models. This reduction in weight translates to 10% fuel savings during transit from our factories to your site and occupies 11% less space when packaged during shipping.

Maintenance and longevity

Equipped with KLEEMANN Live, the IoT system that collects, transmits, and analyzes data and information for the elevators remotely and in real-time, City 100 reduces significantly the frequency of unscheduled maintenance visits, prolonging the lift's service life.



Digital connectivity

Advanced digital connectivity is seamlessly integrated into the City 100 operation through **KLEEMANN Live**, elevating the lift experience to its optimum potential. Moreover, City 100 is available online via KLEEMANN Portal, offering an exclusive, easy and efficient purchase.



KLEEMANN Live

Take full control of your lift operations 24/7 through a comprehensive solution that enhances elevator management with remote monitoring, preventive maintenance and real-time data insights & statistics. Improve efficiency, reduce costs and ensure peace of mind for you and your customers.

Easy remote access

Available for desktop or smart device

- Monitor the current elevator status
- Receive real-time notifications for events & errors
- Get suggestive actions for preventive alerts
- View, edit & compare GENIUS20 controller parameters
- Inspect rides quality & statistics insights
- Reset safely & remotely non-critical errors

Benefits

SAVE TIME & MONEY

- Reduce on-site visits and shorten their duration
- Minimize downtime and resolve issues remotely when possible
- Provide preventive support to extend equipment lifespan

GROW YOUR BUSINESS

- Expand and support more contracts with the same team
- Offer flexible solutions to your customers and increase satisfaction
- Build trust and elevate your professional image through innovation

POWER UP YOUR PERFORMANCE

- Strengthen team collaboration and optimize resource planning
- Demonstrate professionalism and accountability
- Enhance technical capabilities and service delivery

KLEEMANN Portal

Contact your sales engineer to get access to the portal

Available for desktop or smart device

KLEEMANN Portal has been designed and developed with your needs in mind. It is a platform that allows you to quickly and easily create and receive plans and quotes, as well as place your elevator order electronically.

Simply choose the cabin dimensions you want to generate accurate and realistic 3D plans and views.

With the KLEEMANN Portal, you also have the ability to browse your history to retrieve data and download details of previous quotes. You can also navigate your offers' history to retrieve and download the details of previous offers and quotes, request the creation of new drawings and plans and check your order status.

Features & Highlights

Features

- Detailed designs and quotes
- Integrated cabin design options. Real-time changes.
- More than one shaft dimension option for the given cabin dimensions
- Realistic 3D plans and views. Real-time changes.
- Auto correction
- Installation plans generated by the KLEEMANN Portal
- Responsive web design (for desktop, tablet or mobile devices)

Highlights

- Offer available in 5 minutes
- Planning data available in 10 minutes
- Online order
- Ease of use and flexibility
- Upgraded user experience
- Fast delivery time

Mobile & Tablet Apps



live.kleemannlifts.com

LIFT CONTROL PRO

Elevate Maintenance Efficiency: Download the app, connect and manage elevators anywhere anytime with Lift Control Pro, a user-friendly smart device application that allows you to use the majority of KLEEMANN Live functions.

LIFT CONTROL

Offer to your customers (facility managers, building owners etc.) access to Lift Control, a intuitive smart device application that promotes transparency and demonstrates clear evidence of service effectiveness.

Access the platform anytime using your KLEEMANN credentials

portal.kleemannlifts.com



Design options City 100



Purity S

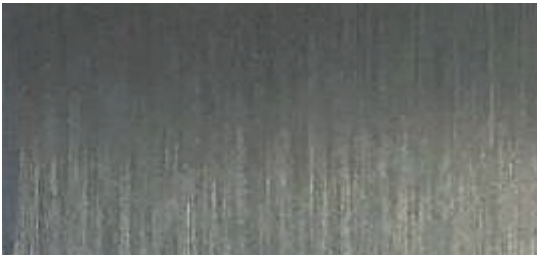
City 100 is provided with the Purity S cabin, which combines durability and simplicity. It enables easy installation from within the cabin, a design free from visible screws, and a new packaging that significantly reduces installation time.

Purity C

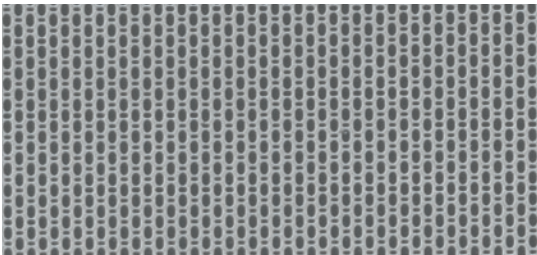
City 100 is also provided with Purity C, a cabin that embraces the freshness of architectural trends. Purity C delivers a modern edge that seamlessly aligns with the latest design aesthetics but also ensures a hassle-free installation from within the cabin.



Stainless steel



Satin



Linen

Skinplate



F12 PPS

Paint



Pale Code

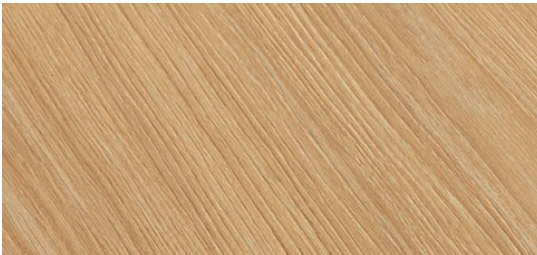


Walls Stainless steel linen
Ceiling C10
Floor Rubber 6801
Handrail K2



Walls Concrete like lime light
Ceiling C11
Floor Rubber 6801
Handrail K2

Wood like



Timber Variant

Concrete like



Lime Light

Steel like



Mighty Silver

Available only at
KLEEMANN Portal

Colors may differ slightly from those shown in the brochure, owing to the limitations of the printing process.

Pictures of the materials illustrate detailed part of each material and not its rendering on the cabin surface.

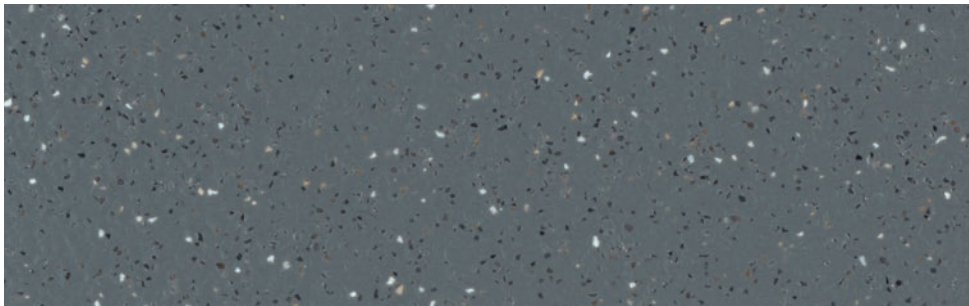


Interior materials
& Operating panels

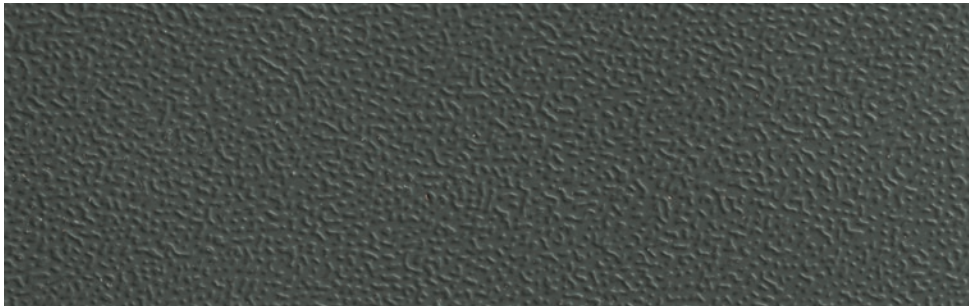
Floors
Rubber



6801



6768



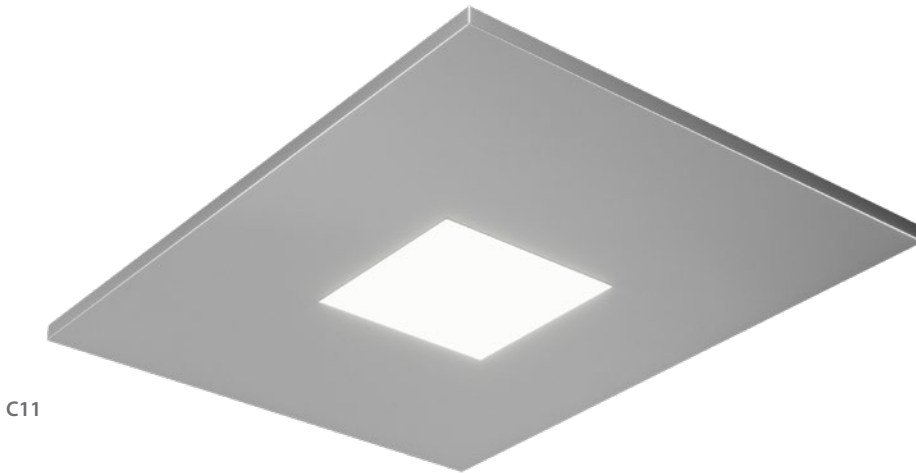
6727

Ceilings

AVAILABLE FINISH
Mirror



C10



C11

Handrails

AVAILABLE FINISH
Mirror



K2



K3

According to EN81-70

Available only at
KLEEMANN Portal

Colors may differ slightly from those shown in the brochure, owing to the limitations of the printing process.

Pictures of the materials illustrate detailed part of each material and not its rendering on the cabin surface.



Button
B37Q DIMENSIONS
(W) 37 mm x (H) 37 mm



Button
H40Q DIMENSIONS
(W) 40 mm x (Y) 40 mm



Car Operating Panel

AKC BES DIMENSIONS
(W)200 mm x (H)1900 mm



Car Operating Panel

DKC DIMENSIONS
(W)200 mm x (D)24 mm x (H)1000 mm



Car Operating Panels

HALO SC600 DIMENSIONS
(W) 225 mm x (D) 14 mm x (H) 1900 mm



HALO SC500 DIMENSIONS
(W) 225 mm x (D) 14 mm x (H) 1000 mm



Landing Operating Panels

HALO SL621 DIMENSIONS WITH DISPLAY
(W) 95 mm x (D) 14 mm x (H) 335 mm



HALO SL630 DIMENSIONS WITHOUT DISPLAY
(W) 95 mm x (D) 14 mm x (H) 225 mm

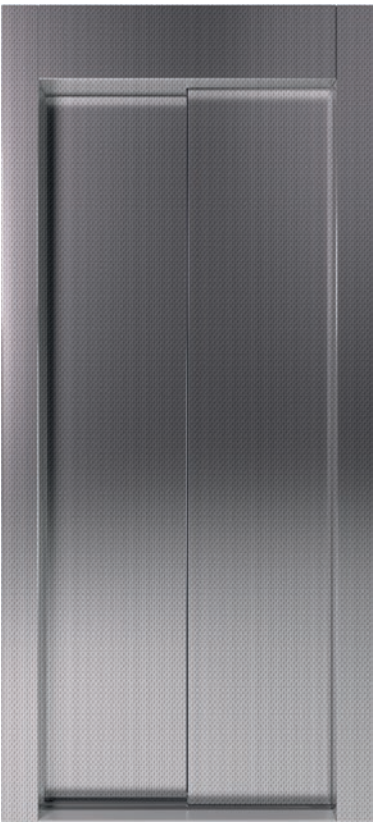


Door Frame
AKL001

Door Frame
SOLUTION WITH NO DISPLAY



Landing Indicator
NEXT DIRECTION ARROWS



Door
AUTOMATIC TELESCOPIC



AVAILABLE FINISHES
Stainless steel - Satin
Stainless steel - Linen
Paint - Pale code

Characteristics

- AKC BES & DKC are only compatible with B37Q buttons, while HALO is compatible with the H40Q button, with white illumination
- AKC BES & DKC are only available with red dot matrix display, while HALO is available with white dot matrix & TFT display

Available only at
KLEEMANN Portal

Colors may differ slightly from those shown in the brochure, owing to the limitations of the printing process.

Pictures of the materials illustrate detailed part of each material and not its rendering on the cabin surface.



Key features & Planning data City 100

Product fact sheet

Features	City 100
Performance	
Advanced door opening	<input type="radio"/>
Full load	<input checked="" type="radio"/>
Relevelling	<input checked="" type="radio"/>
Parking level in main floor	<input type="radio"/>
Remote monitoring (KLEEMANN Live)	<input checked="" type="radio"/>
Energy saving	
Energy saving LED lighting	<input checked="" type="radio"/>
Standby mode	<input type="radio"/>
Safety & Regulations	
Full height safety edge (Light curtain)	<input checked="" type="radio"/>
Emergency light	<input checked="" type="radio"/>
Two/three-way intercom	<input checked="" type="radio"/>
Fireproof doors E120	<input checked="" type="radio"/>
EN 81-20	<input checked="" type="radio"/>
EN 81-28, Emergency call system	<input checked="" type="radio"/>
EN 81-70, Accessibility to lifts	<input type="radio"/>
EN 81-73, Fire evacuation	<input type="radio"/>

☒ Default ☐ Optional

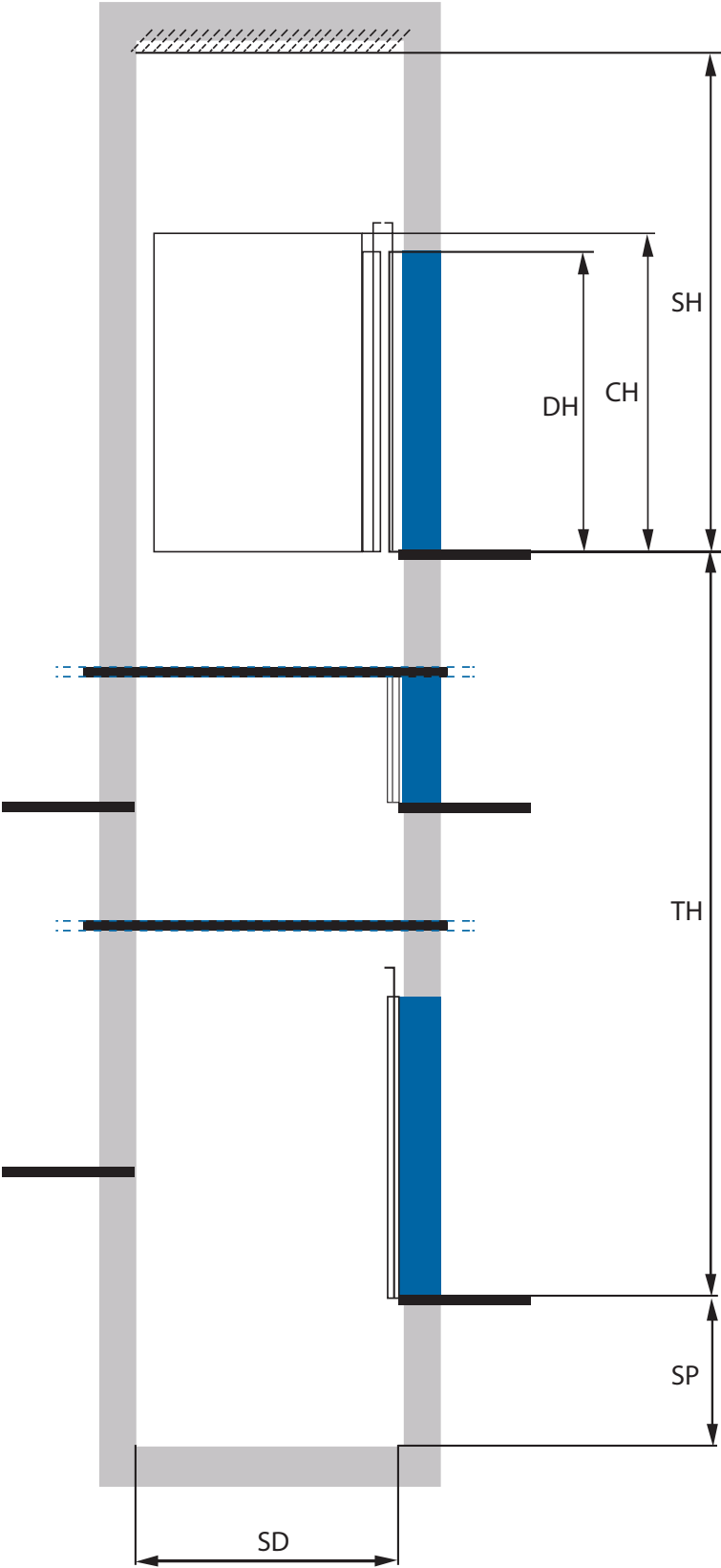
Features	City 100
Accessibility & comfort	
Door open button	<input checked="" type="radio"/>
Door close button	<input type="radio"/>
Audible floor announcement	<input type="radio"/>
Main floor push button with round green frame	<input type="radio"/>
Car ventilation fan	<input type="radio"/>
Shaft & Landings	
Controller in door frame - At top floor	<input checked="" type="radio"/>
Digital & electronics	
Controller hand terminal	<input type="radio"/>
Installation & maintenance	
Pendant station	<input type="radio"/>
Guide alignment tool	<input type="radio"/>

Planning data

Shaft layout

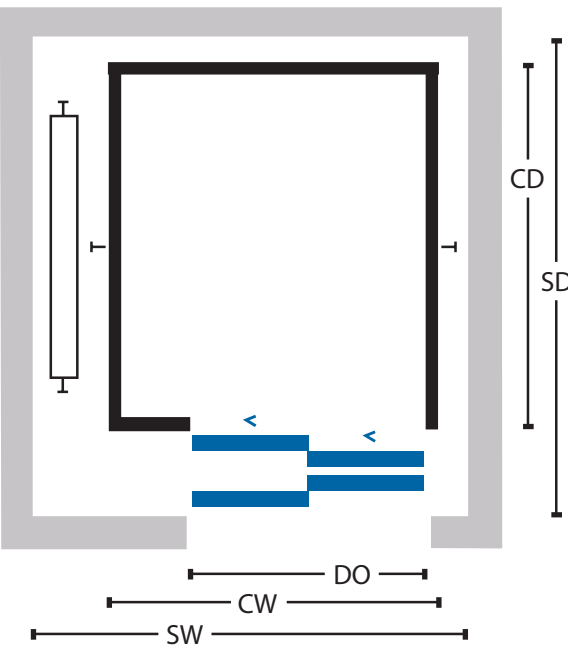
- SH Shaft headroom
- SP Shaft pit
- CH Cabin height
- DH Door height
- TH Travel height

- SH 3300/3400 mm
- SP 1000 mm
- CH 2100/2200 mm
- DH 2000/2100 mm
- TH Maximum 21000 mm




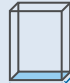




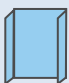




Door options

- SW Shaft width
- DO Door opening
- CW Cabin width
- CD Cabin depth
- SD Shaft depth



Planning data

BASIC INFO			CABIN INFO		DOOR INFO			SHAFT INFO		
Rated load	Passengers	Speed	Cabin dimensions (WxD) (front entrance only)	Cabin height	Door type	Door opening	Door height	Shaft dimensions (WxD) (front entrance only)	Shaft pit	Shaft headroom
										
kg	No	m/s	mm	mm		mm	mm	mm	mm	mm
320	4	1	800 x 1100	2100/2200	2P-Side	700	2000/2100	1300 x 1500	1000	3300/3400
400	5	1	800 x 1200	2100/2200	2P-Side	700	2000/2100	1300 x 1600	1000	3300/3400
450	6	1	1000 x 1250	2100/2200	2P-Side	800	2000/2100	1450 x 1650	1000	3300/3400
450	6	1	1000 x 1250	2100/2200	2P-Side	800	2000/2100	1500 x 1700	1000	3300/3400
630	8	1	1100 x 1400	2100/2200	2P-Side	800	2000/2100	1550 x 1800	1000	3300/3400
630	8	1	1100 x 1400	2100/2200	2P-Side	900	2000/2100	1600 x 1800	1000	3300/3400
1000	13	1	1100 x 2100	2100/2200	2P-Side	800	2000/2100	1550 x 2450	1000	3300/3400
1000	13	1	1100 x 2100	2100/2200	2P-Side	900	2000/2100	1600 x 2450	1000	3300/3400
1000	13	1	1400 x 1600	2100/2200	2P-Side	1000	2000/2100	2000 x 2000	1000	3300/3400

KLEEMANN has a worldwide presence in over 100 countries with local presence in key market points. It stands out for its product range, high quality and control standards, world class design and for its expertise in custom made solutions. Constantly monitoring the global market trends, the company continues to innovate, grow, develop, and improve while consistently remaining in tune with its global character.



KLEEMANN
Your 1st Choice in Lifts

KLEEMANN HELLAS SA
Kilkis Industrial Area
P.O. BOX 25, Kilkis, 611 00 - Greece
G.E.M.I. 14486435000

Colors may differ slightly from those shown in the brochure, owing to the limitations of the printing process. Pictures of the materials illustrate detailed part of each material and not its rendering on the cabin surface.

While every effort has been made to ensure information accuracy, KLEEMANN bears no responsibility for typographic errors or omissions.