

Residential & Commercial Elevators City 300



City 300 lift solution by KLEEMANN offers unparalleled flexibility in design. At the same time, it ensures more efficient shaft dimensions, space savings in the cabin, and high energy efficiency. Perfect for mid-rise residential & commercial buildings with up to 16 stops, City 300 offers excellent performance and reliable operation.

Choose City 300 for a versatile, sustainable, and efficient elevator solution. [Trust the KLEEMANN expertise and ensure added value for your project.](#)



Contents

OVERVIEW	4	OPERATING PANELS & DOORS	31
City 300	4	Surface mounted	32
		Flush mounted	34
		Buttons & door frame	35
		Doors	36
ADVANTAGES	9		
Optimized shaft efficiency	10	KEY FEATURES & PLANNING DATA	39
Sustainable design & energy efficiency	12	Product fact sheet	40
Comfort & versatile design	14	Planning data	42
Digital connectivity	16		
DESIGN OPTIONS	19		
Purity S	20		
Purity C	22		
Purity E	24		
Interior materials	28		

City series by KLEEMANN

The next generation
of traction MRL lifts

With the City series, you can explore a whole range of advantages, including space savings, rapid installation, reduced total cost of ownership, energy efficiency, remote monitoring, as well as a smooth and safe ride.

City 100	City 300	City 400
For low-rise & low-traffic buildings	For mid-rise & mid-traffic residential & commercial buildings	For mid-rise & high-traffic commercial buildings



City 300

Manufactured with high-quality materials and featuring high energy efficiency, this machine-room-less (MRL) elevator offers reliability, design flexibility, and optimized space saving for residential & commercial buildings up to 16 stops.



Technical specifications

Model	City 300
Rated load (Kg)	320-1050
Max travel (m)	45
Max number of stops	16
Max speed (m/s)	1,6
Max persons	14
Min pit depth (mm)	900
Min headroom (mm)	3300
Complies with	Lifts directive 2014/33/EU

Recommended uses

Residential & commercial buildings
Mid-traffic & mid-rise buildings



Description & features

City 300 offers more efficient shaft dimensions, allowing for the recovery of valuable space and reducing installation time. Its eco-friendly design and high-quality materials, both in construction and packaging, contribute to reducing the building’s overall carbon footprint and enhancing its sustainability.

Moreover, its integrated digital tools and versatile design make the City 300 an excellent value-for-money solution, flexible and easily adaptable to the requirements of mid-traffic residential & commercial buildings.

Optimized shaft efficiency

A design that saves up to 50mm in shaft width or allows the accommodation of an additional passenger in the cabin.

Superior engineering and design

Engineered to meet the standards of a remarkably smooth ride, City 300 offers a variety of quality materials to encourage a mix and match approach and enable the process of creating the right look and feel.

Sustainable design


City 300 helps buildings reduce carbon emissions with its eco-friendly design and packaging while also boosting property value. With a lighter weight and a construction that requires no welding and minimal use of paint, it is perfect for eco-conscious projects.

Advanced digital connectivity


City 300 integrates advanced digital tools, including KLEEMANN Live and Lift Control for remote elevator control via mobile. Embrace digital convenience by exclusively ordering City 300 online through our KLEEMANN Portal.

Extra features & upgrades

KLEEMANN
LIVE



ECO-FRIENDLY
LIFT







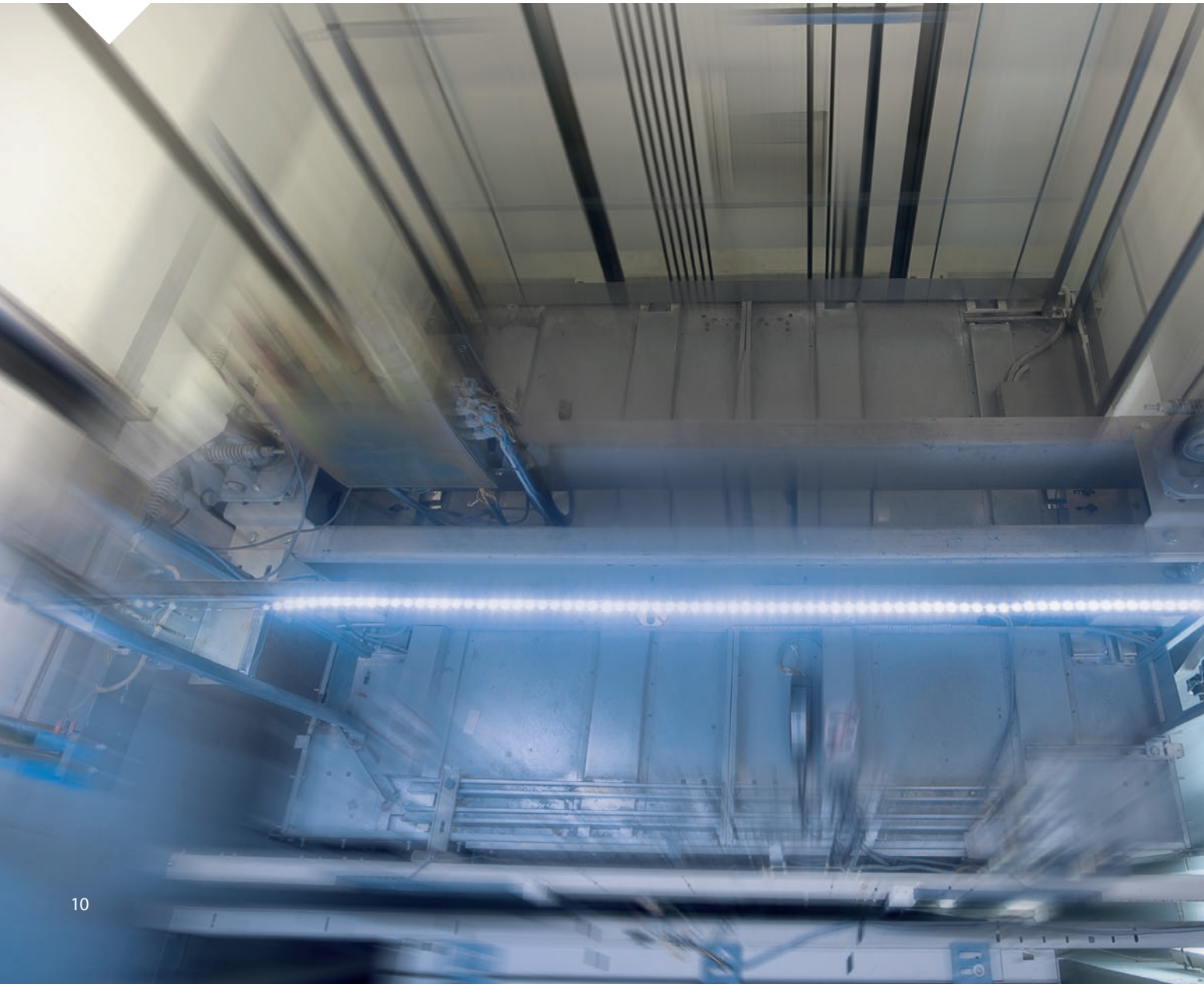
Advantages City 300



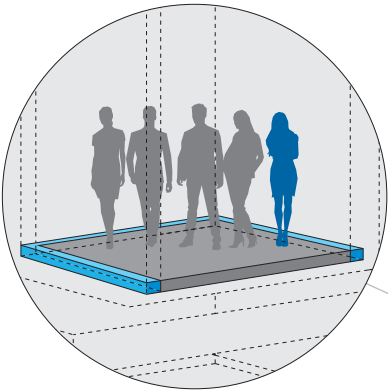
Optimized shaft efficiency

You can either choose to use a smaller shaft up to 50 mm for a building or fit an extra person per lift on a standard shaft. The City 300 design maximizes this potential and minimizes the installation time reducing the overall building's operating and ownership costs.

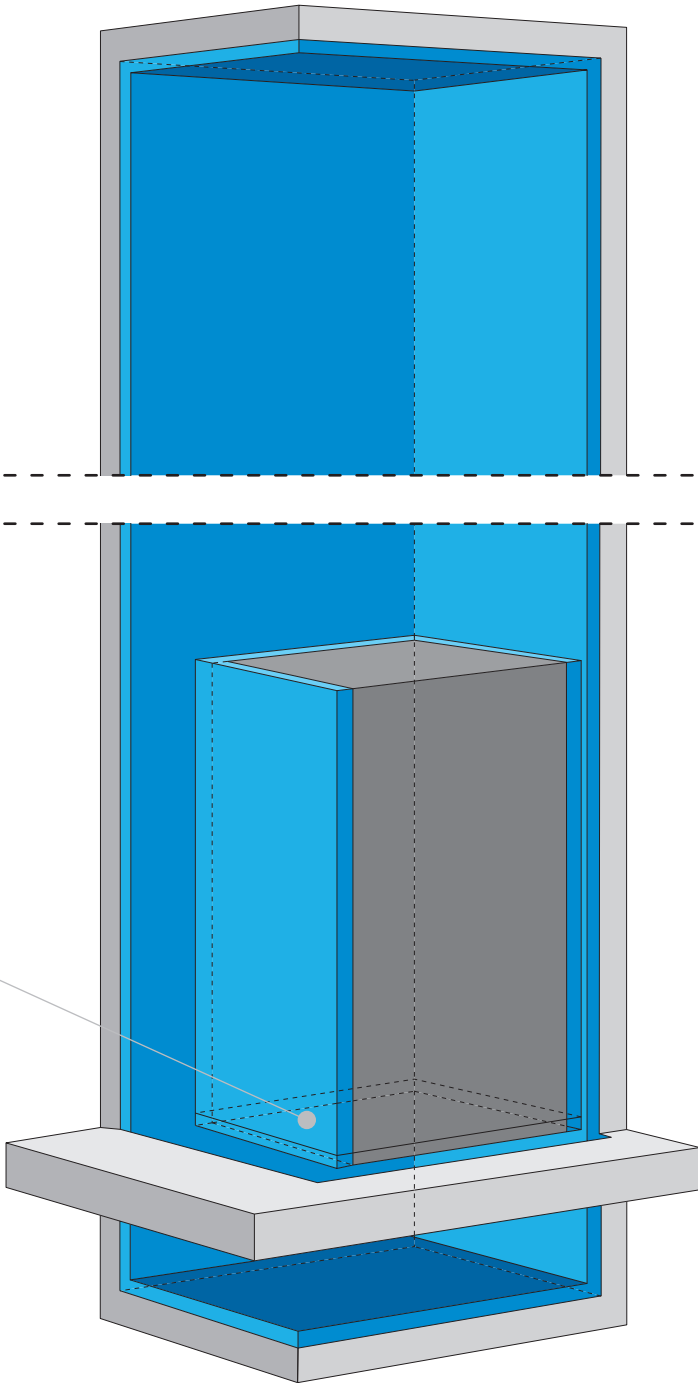
Free up to 3% more floor space per lift.



Increased floor area



You can now fit an extra person per City 300 lift on a standard shaft



Quick & smooth installation

The installation of the City 300 is completed faster due to its pre-engineered components, the final fitting and placement of the cabin and the counterweight frames require tightening fewer than 70 flanged nuts and bolts, without the need for gears or safety washers. Increased shaft tolerances and the absence of supporting bases on the walls ensure no drilling at higher levels in the shaft.

Sustainable design & energy efficiency

City 300 stands out with top certifications, reduced CO₂ emissions, and remarkable energy efficiency. The eco-friendly design of City 300 meets the criteria of the BREEAM and LEED assessment methods, enhancing building sustainability, environmental performance, and property value.

City 300 uses environmentally friendly materials, with no welding and minimal use of paint. Experience superior performance, sustainability, and cost savings with the City 300 lift solution.

Attributes

Energy-saving performance

Equipped with energy-saving features such as standby mode, LED lights, and the optional Regen Drive, City 300 can save up to 40% compared to a typical residential & commercial lift. City 300 meets ISO 25745-2 and VDI 4707-1 standards, showcasing outstanding energy efficiency.

Eco-friendly materials and engineering

Constructed from environmentally friendly materials, City 300 avoids hazardous substances, requires no welding and uses minimal paint.

Reduced CO₂ emissions

With lighter packaging and a new design a standard 8-person, 5-stop City 300 is 400 kg lighter than previous residential & commercial models. This results in an average of 10% fuel savings during transportation and roughly 11% less space when packaged.

Maintenance and longevity

Equipped with KLEEMANN Live, the IoT system that collects, transmits, and analyzes data and information for the elevators remotely in real-time, City 300 reduces significantly the frequency of unscheduled maintenance visits, prolonging the lift's service life.





Comfort & versatile design

Ride quality

City 300 delivers precise floor alignment with a stopping accuracy of ± 1 mm and maintains noise levels as low as 52 dB inside the cabin, fully complying with legal construction regulations to ensure a quiet and comfortable experience.



Range of design

Choose from KLEEMANN's standard range of materials, or customize your product by selecting from a wide range of floor and wall finishes to perfectly fit your space and meet your requirements.



Accessibility

City 300 meets all the requirements of standard 81.70, which enhances accessibility with solutions such as direct transmission of voice commands to the headphones of passengers with hearing impairments, through FM signals.



Automatic evacuation

Option for automatic evacuation, which, in case of a power failure, safely transports passengers to the nearest floor, where the doors open automatically for a secure exit.

Digital connectivity

Advanced digital connectivity is seamlessly integrated into the City 300 operation through **KLEEMANN Live**, elevating the lift experience to its optimum potential. Moreover, City 300 is available online via KLEEMANN Portal, offering an exclusive, easy and efficient purchase.



KLEEMANN Live

Easy remote access

Available for desktop or smart device

Take full control of your lift operations 24/7 through a comprehensive solution that enhances elevator management with remote monitoring, preventive maintenance and real-time data insights & statistics. Improve efficiency, reduce costs and ensure peace of mind for you and your customers.

- Monitor the current elevator status
- Receive real-time notifications for events & errors
- Get suggestive actions for preventive alerts
- View, edit & compare GENIUS20 controller parameters
- Inspect rides quality & statistics insights
- Reset safely & remotely non-critical errors

Benefits

SAVE TIME & MONEY

- Reduce on-site visits and shorten their duration
- Minimize downtime and resolve issues remotely when possible
- Provide preventive support to extend equipment lifespan

GROW YOUR BUSINESS

- Expand and support more contracts with the same team
- Offer flexible solutions to your customers and increase satisfaction
- Build trust and elevate your professional image through innovation

POWER UP YOUR PERFORMANCE

- Strengthen team collaboration and optimize resource planning
- Demonstrate professionalism and accountability
- Enhance technical capabilities and service delivery

Mobile & Tablet Apps



live.kleemannlifts.com

LIFT CONTROL PRO

Elevate Maintenance Efficiency: Download the app, connect and manage elevators anywhere anytime with Lift Control Pro, a user-friendly smart device application that allows you to use the majority of KLEEMANN Live functions.

LIFT CONTROL

Offer to your customers (facility managers, building owners etc.) access to Lift Control, a intuitive smart device application that promotes transparency and demonstrates clear evidence of service effectiveness.

Access the platform anytime using your KLEEMANN credentials

KLEEMANN Portal

Contact your sales engineer to get access to the portal

Available for desktop or smart device

KLEEMANN Portal has been designed and developed with your needs in mind. It is a platform that allows you to quickly and easily create and receive plans and quotes, as well as place your elevator order electronically.

Simply choose the cabin dimensions you want to generate accurate and realistic 3D plans and views.

With the KLEEMANN Portal, you also have the ability to browse your history to retrieve data and download details of previous quotes. You can also navigate your offers' history to retrieve and download the details of previous offers and quotes, request the creation of new drawings and plans and check your order status.

Features & Highlights

Features

- Detailed designs and quotes
- Integrated cabin design options. Real-time changes.
- More than one shaft dimension option for the given cabin dimensions
- Realistic 3D plans and views. Real-time changes.
- Auto correction
- Installation plans generated by the KLEEMANN Portal
- Responsive web design (for desktop, tablet or mobile devices)

Highlights

- Offer available in 5 minutes
- Planning data available in 10 minutes
- Online order
- Ease of use and flexibility
- Upgraded user experience
- Fast delivery time

portal.kleemannlifts.com



Design options City 300



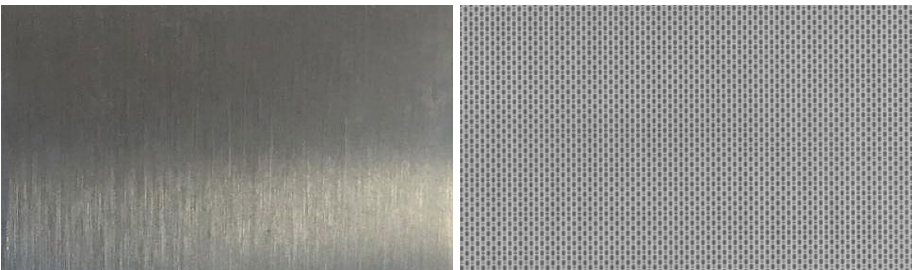
Purity S

City 300 is provided with the Purity S cabin, which combines durability and simplicity. It enables easy installation from within the cabin, a design free from visible screws, and a new packaging that significantly reduces installation time.

Walls Stainless steel linen
Ceiling C10
Floor Rubber 6801
Handrail K2



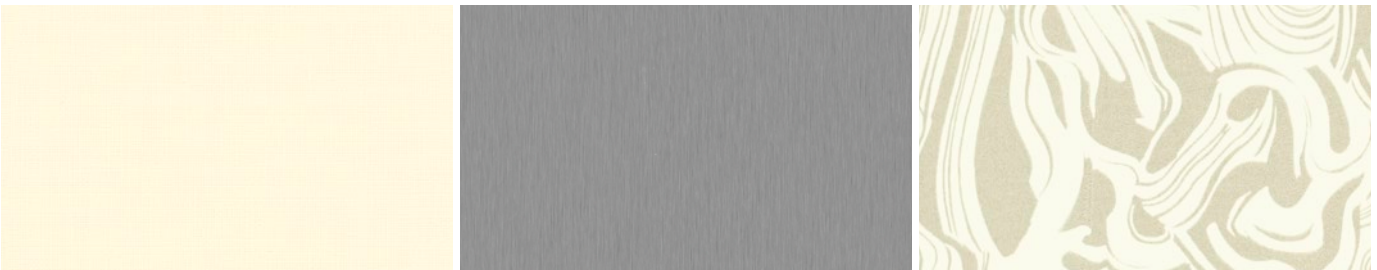
Stainless steel



Satin 441 or 304

Leinen

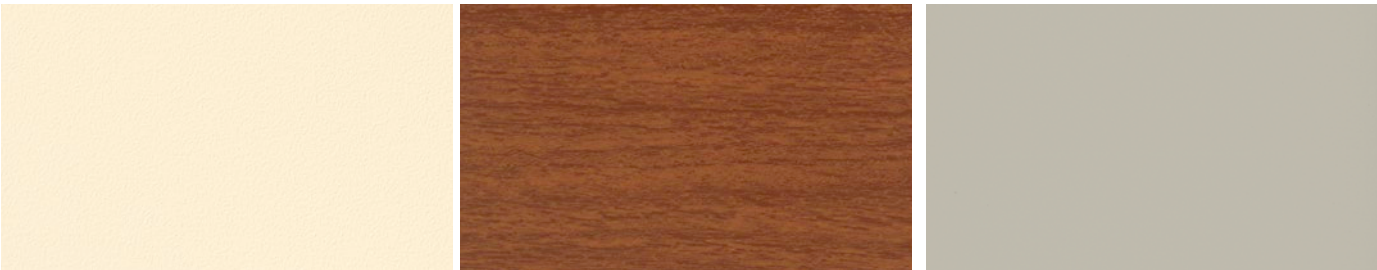
Skinplate



A90 GTA

F12 PPS

PPS 13

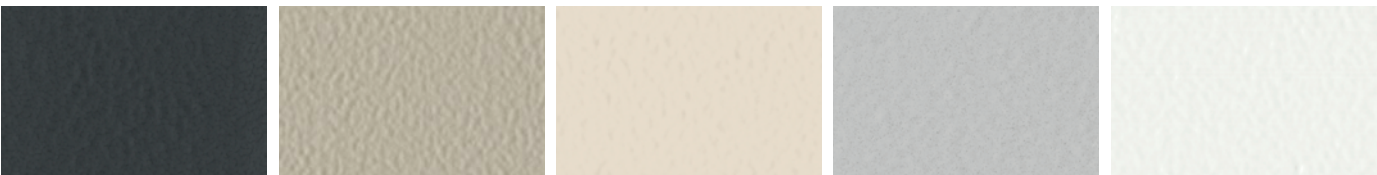


A67 SMA

PPS 93

N19SA

Paint



Liquid Pencil

Pale Code

Abstract Light

Reflex Grey

White Utopia



Grey Flux

Deep Space

Radical Black

Skylight White

Grizo

Available only at
KLEEMANN Portal

Colors may differ slightly from those shown in the brochure, owing to the limitations of the printing process.

Pictures of the materials illustrate detailed part of each material and not its rendering on the cabin surface.



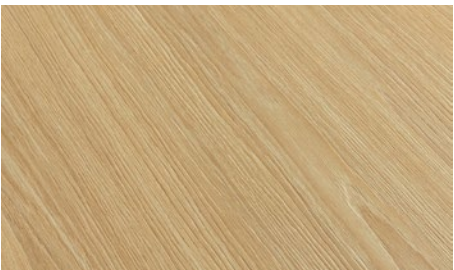
Purity C

City 300 is also provided with Purity C, a cabin that embraces the freshness of architectural trends. With a modern edge that seamlessly aligns into the environment, it also ensures easy installation from within the cabin.

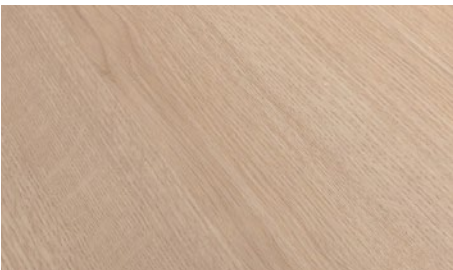
Walls Concrete like blush box
Ceiling C50
Floor Vinyl mosaicon
Handrail K2



Wood like



Timber Variant



Smooth Sand

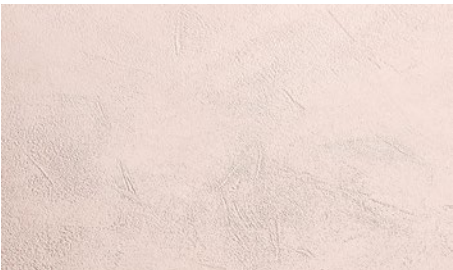


Hacienda Wood

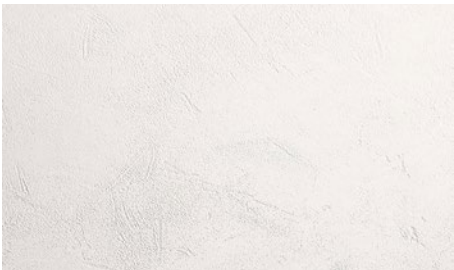
Concrete like



Carrara Frost



Blush Box

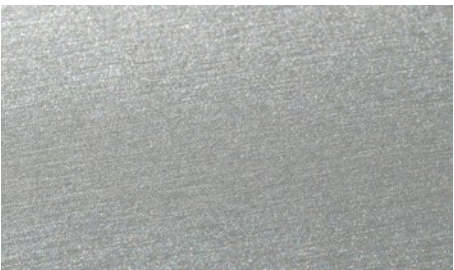


Lime Light

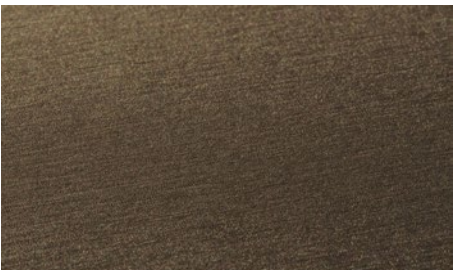


Cloud Lime

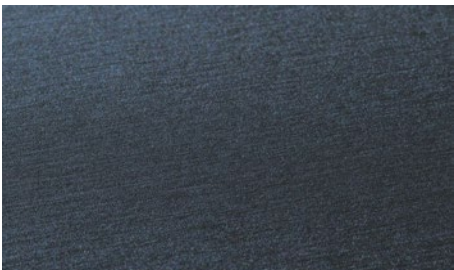
Steel like



Mighty Silver



Bronzo



Oceanic Blue

Available only at
KLEEMANN Portal

Colors may differ slightly from those shown in the brochure, owing to the limitations of the printing process.

Pictures of the materials illustrate detailed part of each material and not its rendering on the cabin surface.



Purity E

City 300 is provided with Purity E, a cabin where sophistication meets innovative design. Available in three distinctive wood like finishes, each boasting three unique engraving modes (horizontal, vertical and thick lines), the Purity E offers nine exclusive options to decorate your cabin.

Purity E

with
thick lines

Walls Wood like vorion wood
Ceiling C10
Floor Vinyl mosaicon
Handrail K2



with
vertical lines

Wall Wood like Wood Mark
Ceiling C13
Floor Vinyl Light Cement
Handrail K2





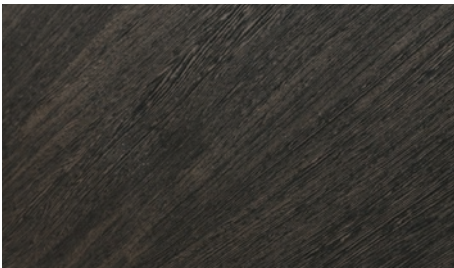
Purity E

with
horizontal lines

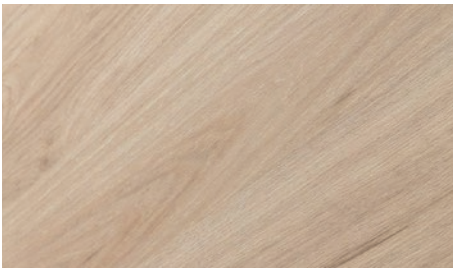
Wall Wood like Ecliptic Black
Ceiling C40
Floor Artificial Granite Regal Beige
Handrail K2



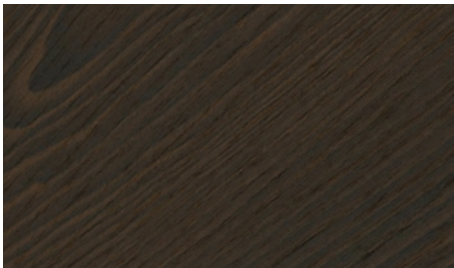
Wood like



Ecliptic Black



Vorion Wood



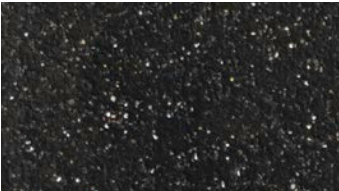
Wood Mark



Interior
materials

Floors

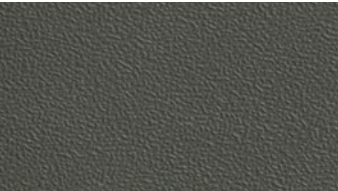
Rubbers



6801



6768

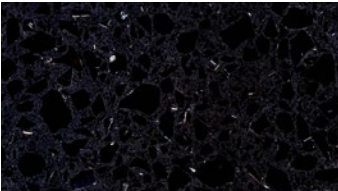


6727

Artificial granites



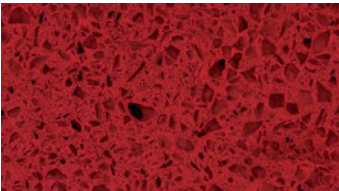
Regal White



Regal Black

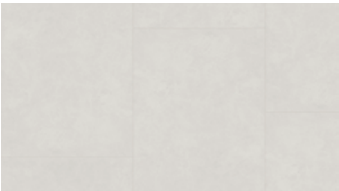


Regal Beige

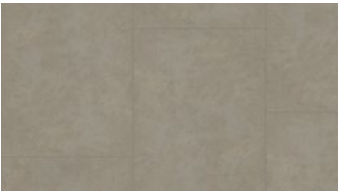


Regal Red

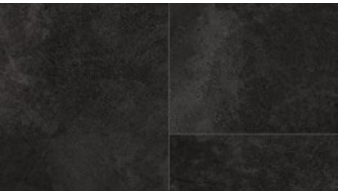
Vinyls



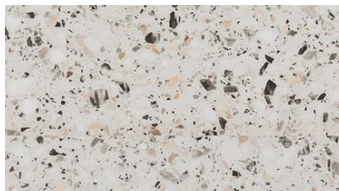
Light Cement



Concrete Vibe



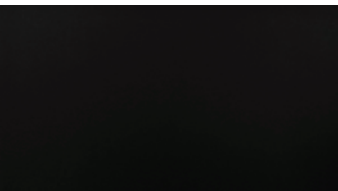
Oxytone Concrete



Mosaicon



Timber Tone



Black Luxe

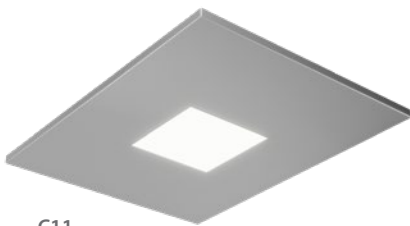
Ceilings

AVAILABLE FINISH

Mirror



C10



C11



C12



C13



C40



C41



C50

Handrails

AVAILABLE FINISH

Mirror



K2



K3

According to EN81-70



Design options


Operating panels & Doors

City 300






Surface Mounted



Car Operating Panels

HALO SC600 DIMENSIONS
(W) 225 mm x (D) 14 mm x (H) 1900 mm


HALO SC500 DIMENSIONS
(W) 225 mm x (D) 14 mm x (H) 1000 mm



Landing Operating Panels

HALO SL621 DIMENSIONS WITH DISPLAY
(W) 95 mm x (D) 14 mm x (H) 335 mm

HALO SL630 DIMENSIONS WITHOUT DISPLAY
(W) 95 mm x (D) 14 mm x (H) 225 mm



Landing Indicator

HALO SH600 DIMENSIONS
(W) 335 mm x (D) 14 mm x (H) 95 mm



Landing Operating Panels

FTL INOX SLIM DIMENSIONS
(W) 108 mm x (D) 10 mm x (H) 230 mm



Landing Indicator

FTHL SLIM DIMENSIONS
(W) 230 mm x (D) 10 mm x (H) 108 mm



Car Operating Panel

DKC DIMENSIONS
(W) 200 mm x (D) 24 mm x (H) 1000 mm



Landing Operating Panels

FTL DIMENSIONS
(W) 106 mm x (D) 25 mm x (H) 250 mm



Landing Indicator

FTHL DIMENSIONS
(W) 250 mm x (D) 25 mm x (H) 106 mm

Characteristics

- Ultra slim design at 14mm depth
- Compatible only with buttons H40Q, with white illumination
- KLEEMANN CAN open bus communication
- Available with white dot matrix & TFT display
- Black glass with Stainless Steel satin finishing
- Full length white led illumination at both sides

Characteristics

- Available with red, blue dot matrix & TFT display
- Compatible with buttons B37Q, B37R & AKC BES is also available with buttons MT-42, RT-42

Available only at
KLEEMANN Portal

Colors may differ slightly from those shown in the brochure, owing to the limitations of the printing process.

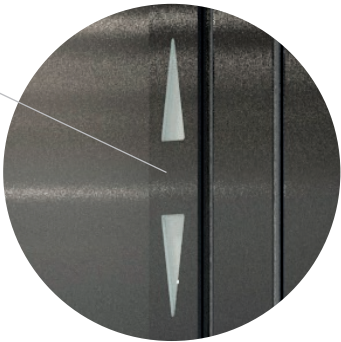
Pictures of the materials illustrate detailed part of each material and not its rendering on the cabin surface.



Flush Mounted



Car Operating Panel
AKC BES DIMENSIONS
(W) 200 mm x (H) 1900 mm



Landing Indicator
NEXT DIRECTION ARROWS



Landing Operating Panels
AKL DIMENSIONS
(W) 85 mm x (H) 265 mm



Landing Indicator
P95-902 DIMENSIONS
(W) 230 mm x (D) 20 mm x (H) 92 mm

Buttons



B37Q
DIMENSIONS
(W) 37 mm x (H) 37 mm



MT42
DIMENSIONS
(W) 39 mm x (Y) 39 mm



MT42 according to EN81-70
DIMENSIONS
(W) 39 mm x (Y) 39 mm



H40Q
DIMENSIONS
(W) 40 mm x (Y) 40 mm



B37R
DIMENSIONS
ø 30 mm



RT42
DIMENSIONS
ø 30 mm



RT42 according to EN81-70
DIMENSIONS
ø 30 mm

Door
frame



Door Frame AKL001
Door frame
solution with
no display



Door Frame AKL101
Door frame
solution with
display

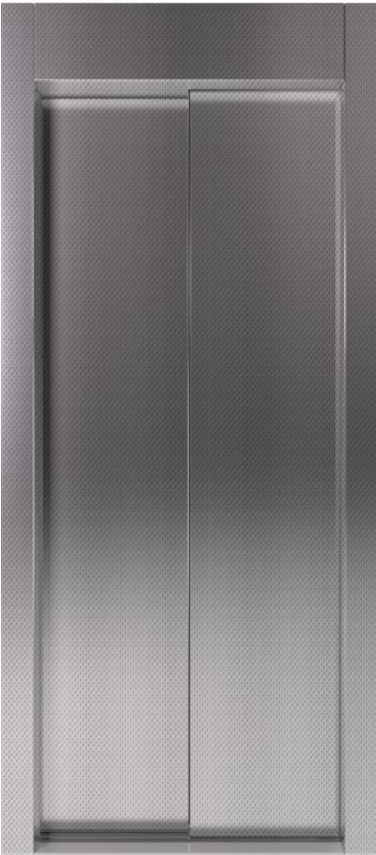
Available only at
KLEEMANN Portal

Colors may differ slightly from those
shown in the brochure, owing to the
limitations of the printing process.

Pictures of the materials illustrate
detailed part of each material and not
its rendering on the cabin surface.



Doors



Automatic
Telescopic

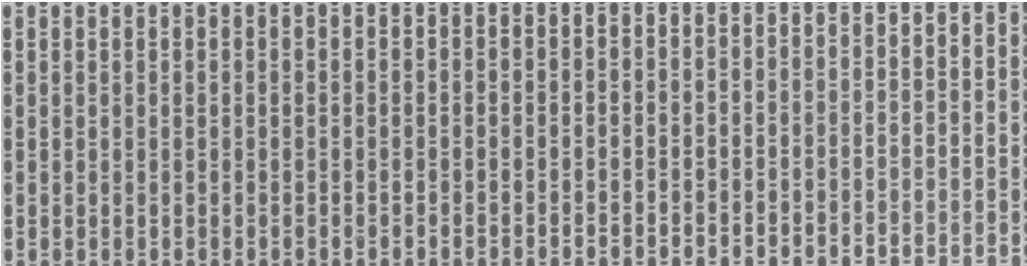


Automatic
Central

Stainless steel

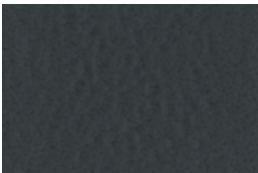


Satin 441 or 304



Linen

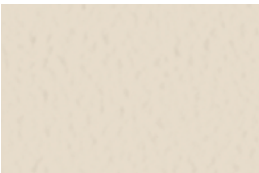
Paint



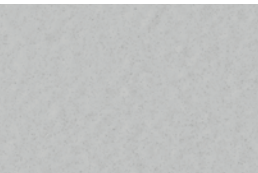
Liquid Pencil



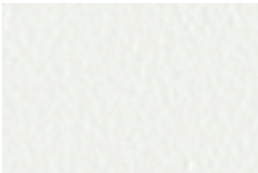
Pale Code



Abstract Light



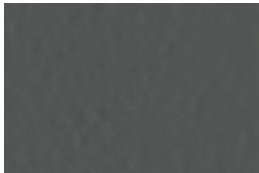
Reflex Grey



White Utopia



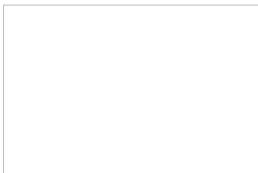
Grey Flux



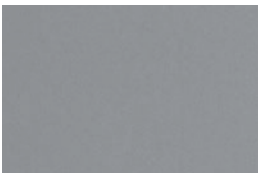
Deep Space



Radical Black



Skylight White



Grizo

Available only at
KLEEMANN Portal

Colors may differ slightly from those shown in the brochure, owing to the limitations of the printing process.

Pictures of the materials illustrate detailed part of each material and not its rendering on the cabin surface.



Key features & Planning data City 300

Product fact sheet

Lift features	City 300
Performance	
Advanced door opening	<input type="radio"/>
Full load	<input checked="" type="radio"/>
40/10 doors (Commercial use)	<input checked="" type="radio"/>
Reinforced door mechanism	<input type="radio"/>
Relevelling	<input checked="" type="radio"/>
Parking level in main floor	<input type="radio"/>
Remote Monitoring (KLEEMANN Live)	<input checked="" type="radio"/>
Energy saving	
Energy saving LED lighting	<input checked="" type="radio"/>
Standby mode	<input type="radio"/>
LSHF Wiring	<input type="radio"/>
Oil collection base (Basins)	<input type="radio"/>
Overload on wire ropes	<input type="radio"/>
Safety & regulations	
Full height safety edge (Light curtain)	<input checked="" type="radio"/>
Emergency light	<input checked="" type="radio"/>
Automatic evacuation	<input type="radio"/>
Two/Three-way intercom	<input checked="" type="radio"/>
Fireproof doors E120	<input checked="" type="radio"/>
EN 81-20	<input checked="" type="radio"/>
EN 81-28, Emergency call system	<input checked="" type="radio"/>
EN 81-70, Accessibility to lifts	<input type="radio"/>
EN 81-73, Fire evacuation	<input type="radio"/>

☒ Default ☐ Optional

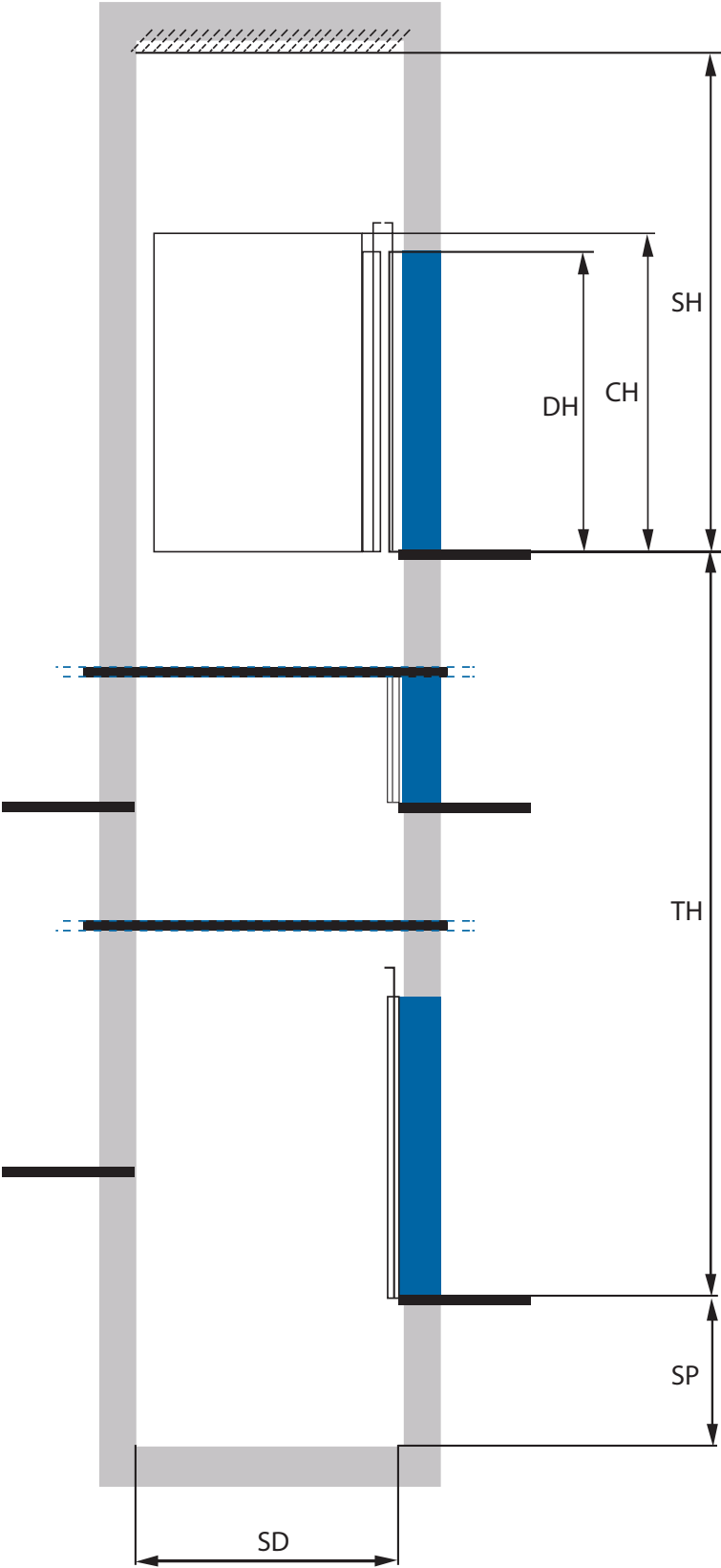
Lift features	City 300
Accessibility & comfort	
Door open button	<input checked="" type="radio"/>
Door close button	<input type="radio"/>
Inductive loop for hearing-impaired passengers	<input type="radio"/>
Audible floor announcement	<input type="radio"/>
Main floor push button with round green frame	<input type="radio"/>
Out of order key switch	<input type="radio"/>
Car attendant (via keyswitch)	<input type="radio"/>
Car ventilation fan	<input type="radio"/>
Elevator air purifier	<input type="radio"/>
Shaft & landings	
Ankerschiene	<input type="radio"/>
Full façade	<input type="radio"/>
Infill Panels	<input type="radio"/>
Controller in door frame - At top floor	<input type="radio"/>
Controller in door frame - At second to top floor	<input type="radio"/>
Digital & electronics	
Controller hand terminal	<input type="radio"/>
CCTV cable	<input type="radio"/>
Installation & maintenance	
Pendant station	<input type="radio"/>
Guide alignment tool	<input type="radio"/>
Motor elevation system	<input type="radio"/>

Planning data

Shaft layout

SH	Shaft headroom
SP	Shaft pit
CH	Cabin height
DH	Door height
TH	Travel height

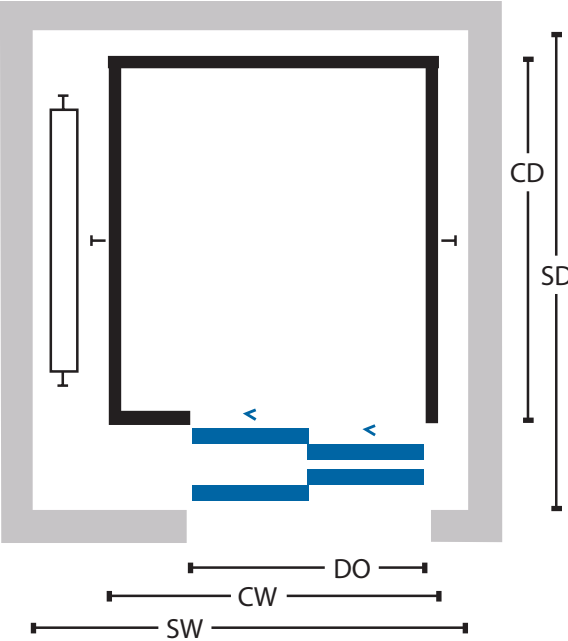
SH	3300/3400/3500 mm
SP	Standard from 900 mm
CH	2100/2200/2300 mm
DH	2000/2100/2200 mm
TH	Maximum 45000 mm



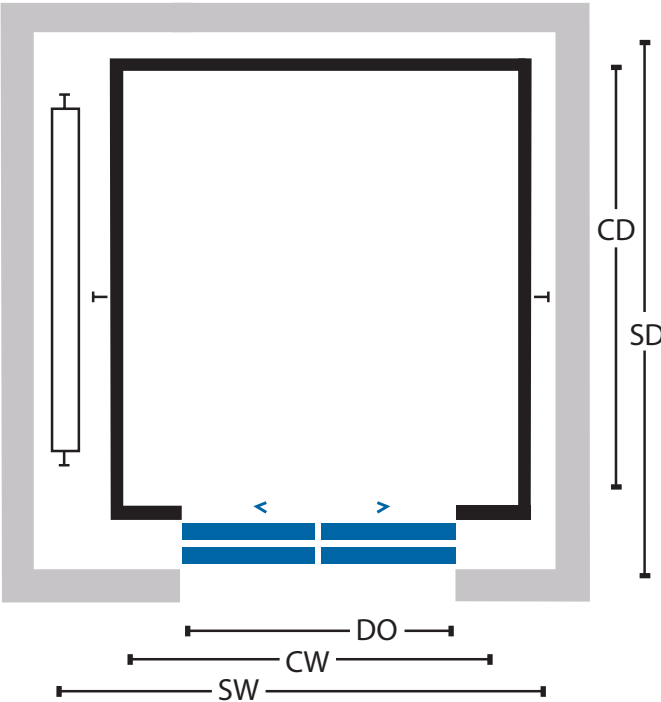
Door options

SW	Shaft width
DO	Door opening
CW	Cabin width
CD	Cabin depth
SD	Shaft depth




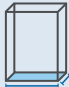
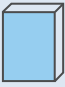






2P-Side



2P-Central



Planning data

BASIC INFO			CABIN INFO		DOOR INFO			SHAFT INFO		
<div>Rated load</div> <div></div> <div>kg</div>	<div>Passengers</div> <div></div> <div>No</div>	<div>Speed</div> <div></div> <div>m/s</div>	<div>Cabin dimensions (WxD) (front entrance only)</div> <div></div> <div>mm</div>	<div>Cabin height</div> <div></div> <div>mm</div>	<div>Door type</div> <div></div>	<div>Door opening</div> <div></div> <div>mm</div>	<div>Door height</div> <div></div> <div>mm</div>	<div>Shaft Dimensions (WxD) (front entrance only)</div> <div></div> <div>mm</div>	<div>Shaft pit</div> <div></div> <div>mm</div>	<div>Shaft headroom</div> <div></div> <div>mm</div>
320	4	1	800 x 1100	2100/2200/2300	2P-Side*	650	2000/2100/2200	1250 x 1450	900	3300/3400/3500
320	4	1	800 x 1100	2100/2200/2300	2P-Side*	700	2000/2100/2200	1300 x 1450	900	3300/3400/3500
320	4	1.6	800 x 1100	2100/2200/2300	2P-Side*	650	2000/2100/2200	1250 x 1450	1030	3500/3600/3700
320	4	1.6	800 x 1100	2100/2200/2300	2P-Side*	700	2000/2100/2200	1300 x 1450	1030	3500/3600/3700
400	5	1	800 x 1200	2100/2200/2300	2P-Side*	650	2000/2100/2200	1250 x 1550	900	3300/3400/3500
400	5	1	800 x 1200	2100/2200/2300	2P-Side*	700	2000/2100/2200	1300 x 1550	900	3300/3400/3500
400	5	1.6	800 x 1200	2100/2200/2300	2P-Side*	650	2000/2100/2200	1250 x 1550	1030	3500/3600/3700
400	5	1.6	800 x 1200	2100/2200/2300	2P-Side*	700	2000/2100/2200	1300 x 1550	1030	3500/3600/3700
450	6	1	1000 x 1250	2100/2200/2300	2P-Side*	800	2000/2100/2200	1450 x 1600	900	3300/3400/3500
450	6	1	1000 x 1300	2100/2200/2300	2P-Side*	800	2000/2100/2200	1450 x 1650	900	3300/3400/3500
450	6	1.6	1000 x 1250	2100/2200/2300	2P-Side*	800	2000/2100/2200	1450 x 1600	1030	3500/3600/3700
450	6	1.6	1000 x 1300	2100/2200/2300	2P-Side*	800	2000/2100/2200	1450 x 1650	1030	3500/3600/3700
630	8	1	1100 x 1400	2100/2200/2300	2P-Side*	850	2000/2100/2200	1550 x 1750	900	3300/3400/3500
630	8	1	1100 x 1400	2100/2200/2300	2P-Side*	900	2000/2100/2200	1600 x 1750	900	3300/3400/3500
630	8	1.6	1100 x 1400	2100/2200/2300	2P-Side*	850	2000/2100/2200	1550 x 1750	1030	3500/3600/3700
630	8	1.6	1100 x 1400	2100/2200/2300	2P-Side*	900	2000/2100/2200	1600 x 1750	1030	3500/3600/3700
675	9	1	1150 x 1400	2100/2200/2300	2P-Side*	900	2000/2100/2200	1600 x 1750	950	3300/3400/3500
675	9	1.6	1150 x 1400	2100/2200/2300	2P-Side*	900	2000/2100/2200	1600 x 1750	1030	3500/3600/3700
800	10	1	1350 x 1400	2100/2200/2300	2P-Side*	1000	2000/2100/2200	1800 x 1750	950	3300/3400/3500
800	10	1.6	1350 x 1400	2100/2200/2300	2P-Side*	1000	2000/2100/2200	1800 x 1750	1030	3500/3600/3700
1000	13/14	1	1100 x 2100	2100/2200/2300	2P-Side*	850	2000/2100/2200	1550 x 2450	950	3300/3400/3500
1000	13/14	1	1100 x 2100	2100/2200/2300	2P-Side*	900	2000/2100/2200	1600 x 2450	950	3300/3400/3500
1000	13/14	1	1400 x 1600	2100/2200/2300	2P-Side*	1000	2000/2100/2200	1900 x 1950	950	3300/3400/3500
1000	13/14	1.6	1100 x 2100	2100/2200/2300	2P-Side*	850	2000/2100/2200	1550 x 2450	1030	3500/3600/3700
1000	13/14	1.6	1100 x 2100	2100/2200/2300	2P-Side*	900	2000/2100/2200	1600 x 2450	1030	3500/3600/3700
1000	13/14	1.6	1400 x 1600	2100/2200/2300	2P-Side*	1000	2000/2100/2200	1900 x 1950	1030	3500/3600/3700

* 2P-Central are also available. All possible options & combinations can be found in KLEEMANN Portal.

KLEEMANN has a worldwide presence in over 100 countries with local presence in key market points. It stands out for its product range, high quality and control standards, world class design and for its expertise in custom made solutions. Constantly monitoring the global market trends, the company continues to innovate, grow, develop, and improve while consistently remaining in tune with its global character.



KLEEMANN
Your 1st Choice in Lifts

KLEEMANN HELLAS SA
Kilkis Industrial Area
P.O. BOX 25, Kilkis, 611 00 - Greece
G.E.M.I. 14486435000

Colors may differ slightly from those shown in the brochure, owing to the limitations of the printing process. Pictures of the materials illustrate detailed part of each material and not its rendering on the cabin surface.

While every effort has been made to ensure information accuracy, KLEEMANN bears no responsibility for typographic errors or omissions.